

DNP

DIGITAL PHOTO PRINTER

DP-DS80D

Printer Driver Instruction Manual
For Windows 7,8,10

September 30, 2017 Ver.1.03

- Safety precautions

Please read the User's Manual for the printer carefully before use, and follow the instructions. Note that the contents of directions for use and safety precautions correspond to the safety standards as of the time the User's Manual has been created.

- Remodeling

For product safety, do not remodel the DP-DS80D printers or the contents of the DP-DS80D printer drivers and the CD.

- Copyright

Copyrights, trademarks or any other intellectual property rights whatsoever that pertain to documents, programs or other items provided with this product, are ascribed to Dai Nippon Printing Co., Ltd., or the respective other holders of rights. Except in cases permitted by applicable laws, these may not be duplicated or used without consent from Dai Nippon Printing Co., Ltd.

Microsoft and Windows are registered trademarks of Microsoft Corporation valid in the USA and other countries.

LEADTOOLS Copyright (C) 2008 LEAD Technologies, Inc.

Contents

Chapter 1 Install	1
1.1 Printer and Host computer Preparation	2
1.2 Installing the Driver Package	2
1.3 Installing the Printer Driver	5
1.4 Installing a Driver for an Unspecified Device	9
Chapter 2 Properties	12
2.1 Opening Printer Properties	12
2.2 Explanation of Print Setting Functions	14
2.2.1 Layout	14
2.2.2 Advanced Options	16
2.2.3 Paper/Quality	19
2.2.4 Option	19
2.2.5 Color Adjustment	20
2.2.6 Printer Information	21
2.3 Default Values for Various Settings	22
2.4 Color Management	22
2.5 Image Size	23
2.6 Print Orientation	24
2.7 Print Method	26
2.7.1 Multi-layout	26
2.7.2 Example of Multi-layout application use	28
2.7.3 Duplex Printing	29
Chapter 3 Updating the Driver	32
Chapter 4 Driver Removal	39

Chapter 1 Install

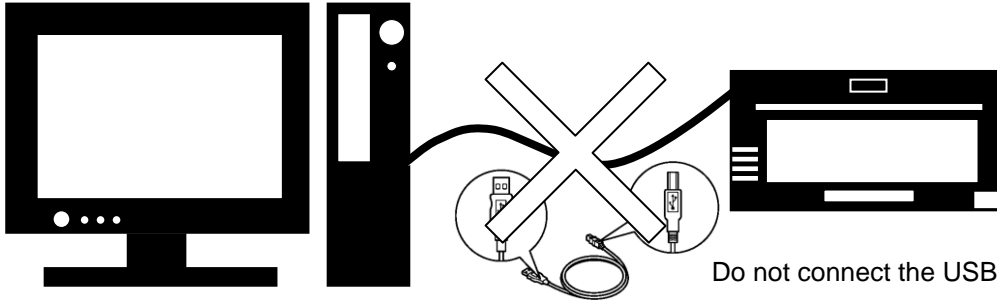
Installation Flow

Installation is done in the following 3 steps.

Details of each step are shown in a subsequent page.

STEP 1 Prepare the printer and computer

→ "1.1 Printer and Host computer Preparation"



Do not connect the USB cable at this step.



STEP 2 Install the driver package

→ "1.2 Installing the Driver Package"

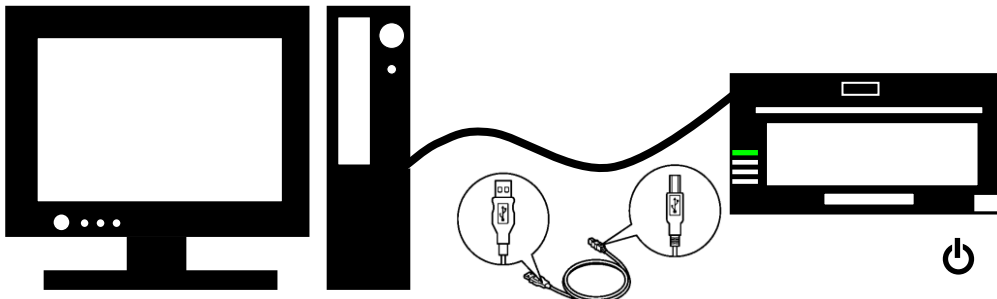


Insert the accessory CD into the disk drive and install the driver package.



STEP 3 Install the printer driver

→ "1.3 Installing the Printer Driver"



Connect the USB cable, turn the printer power ON, and install the printer driver. After installation is complete, reboot the computer.

1.1 Printer and Host computer Preparation

Check that the power for the DP-DS80D printer is OFF.

Have a USB cable ready. But do not connect the printer to the computer with the USB cable at this point.

In order to install the driver, login with administrator right. The following explanations are given on the assumption of use with administrator rights.

1.2 Installing the Driver Package

Insert the accessory CD into the disk drive.

Start Explorer, and click on the corresponding drive. (If the AutoPlay function is on, select “Open folder to view files – using Windows Explorer”.)

In Windows 8 and 10 if the AutoPlay function is on, click on the message of “Tap to choose what happens with this disc.”, then select “Open folder to view files File Explorer”.)

Select the following folders from the accessory CD. *Be sure to select the folder that matches your environment.

DP-DS80D = Windows 7 ... Drive of CD:\Driver\DP-DS80D\English\7
 Windows 8 ... Drive of CD:\Driver\DP-DS80D\English\8
 Windows 10 ... Drive of CD:\Driver\DP-DS80D\English\10

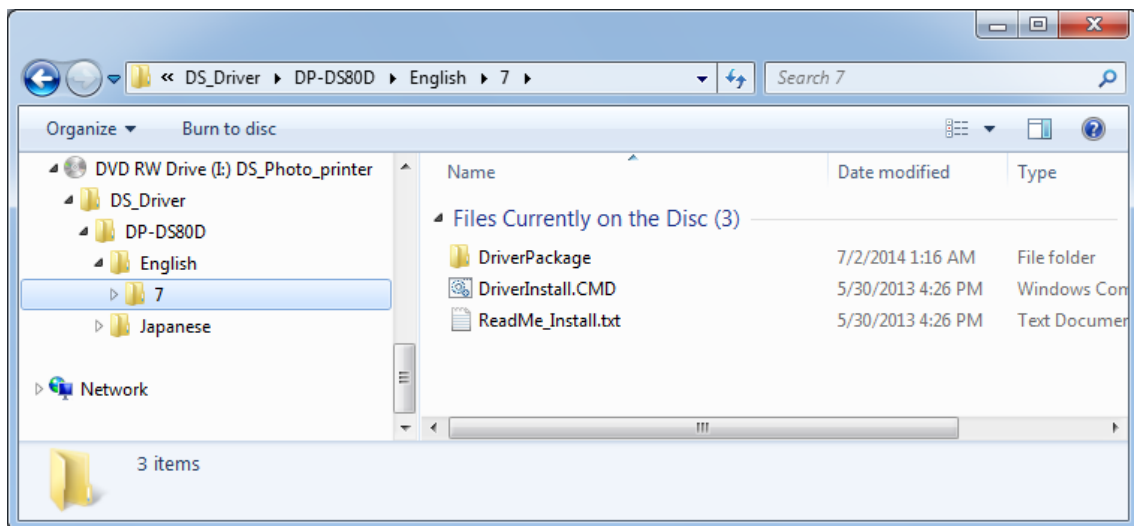


Fig 1.1 Driver Package Folder

In the selected folder, double click on the file “DriverInstall.CMD”. (Depending on your operating environment, the .CMD extension may not be shown.)

The best Driver Package Installer for your operating system (32 or 64 bit) will automatically be selected.

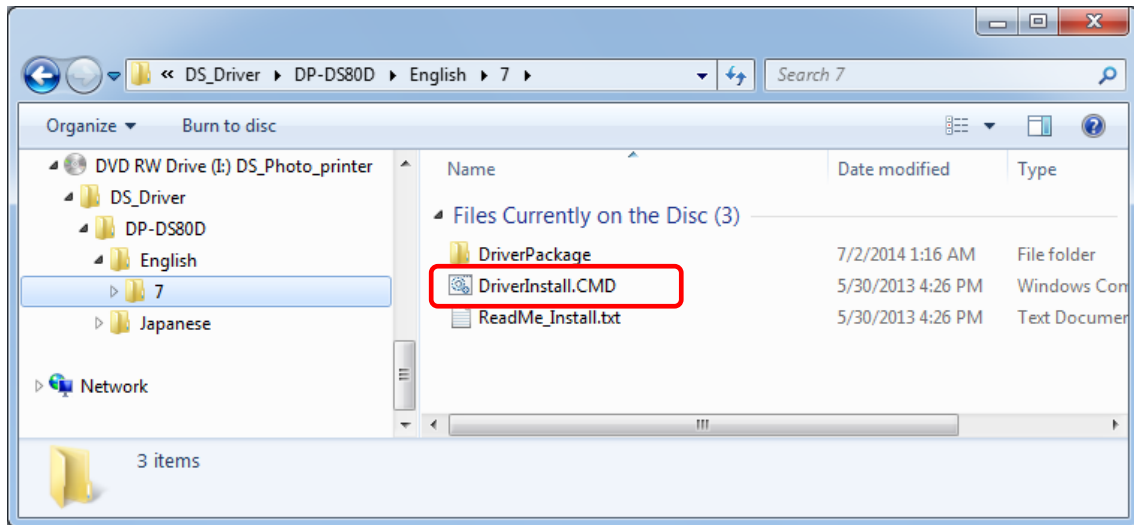


Fig 1.2 Install File

If the User Account Control dialog appears, click on “Yes”.

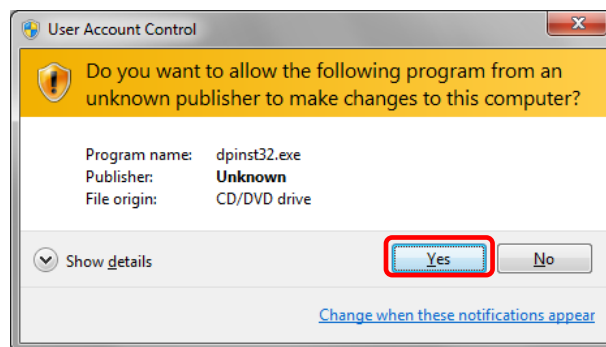


Fig 1.3 User Account Control

When the “Welcome to the Device Driver Installation Wizard!” window appears, click on “Next>”.



Fig 1.4 Starting of Installation Wizard

If the Windows Security confirmation window appears, click on “Install this driver software anyway”.

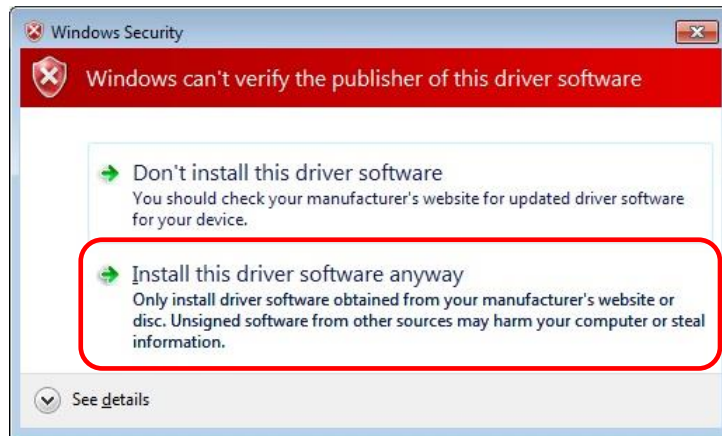


Fig 1.5 Windows Security confirmation

In Windows 8 and 10, click on “Install”.

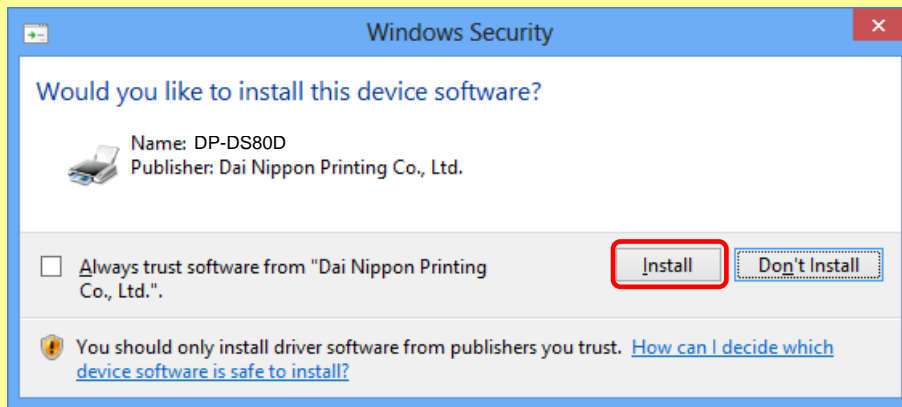


Fig 1.5.ii Windows Security confirmation (Windows 8)

This starts the Driver Package installation. Please wait until it is complete.
When the “Completing the Device Driver Installation Wizard” window appears, click on “Finish”.



Fig 1.6 Completion of the Installation Wizard

1.3 Installing the Printer Driver

Connect the printer to the computer with the USB cable, and turn the printer power ON.
The printer will be recognized, and the driver installation should begin.

* Please refer to the manual for the DP-DS80 printer for connection if needed.

When driver installation begins, the message “Installing device driver software” will appear above the task bar.

The message will not appear in Windows 8 and 10. Please turn to page 7.

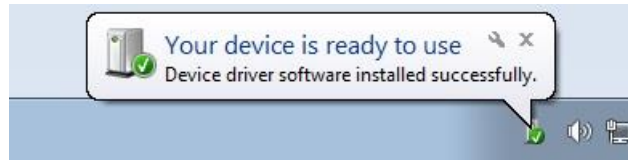


Fig 1.7 Driver Installation message

By clicking on this message, the “Driver Software Installation” window will be opened, and the driver installation status will be shown. Click on “Close” to close the window.

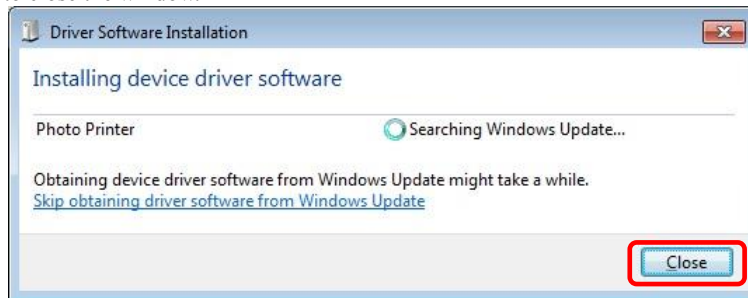


Fig 1.8 Driver Software Installation

* About “Skip obtaining driver software from Windows Update”

If the operating system setting is such that it will get the driver software from Windows Update, it will first search for the driver through Windows Update, so it will take more time to complete the installation. If you skip getting the driver software through Windows Update, the time to complete the installation will be decreased (Depending on the environment, it may take some time to complete the installation).

Click on “Skip obtaining driver software from Windows Update” in the “Driver Software Installation” window.

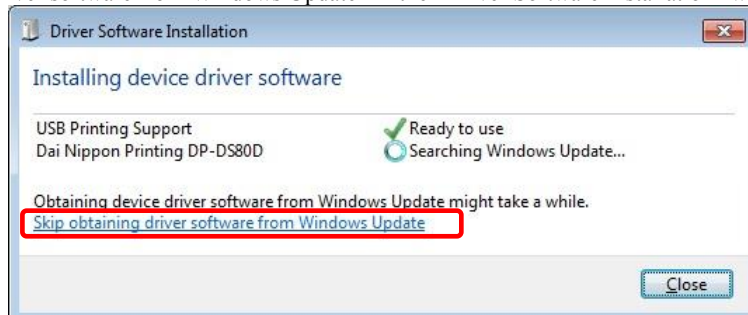


Fig 1.9 Skip obtaining driver software from Window Update

When the confirmation window appears, click on “Yes”.



Fig 1.10 Skip getting the driver software from Windows Update

From a beginning of installation after a while, the message “Your device is ready to use” will appear above the task bar, and the printer driver installation will be complete.



Fig 1.11 Driver Installation Complete message

By clicking on this message, the “Driver Software Installation” window will be opened, and “Your device is ready to use” will be shown. Click on “Close” to close the window.

(If the “Driver Software Installation” window is shown from the start of installation, the message above will not be shown.)

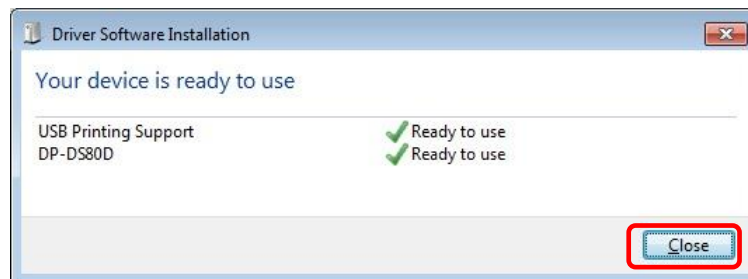


Fig 1.12 Driver Software installation complete

Select “Start”, then “Control Panel”, and open the control panel.

In Windows 8, right click the Start screen, select right-under the "All apps" and select the control panel.

In Windows 10, right click the Start, and then click "Control Panel" to open the Control Panel.

Click on “View devices and printers” in the control panel.

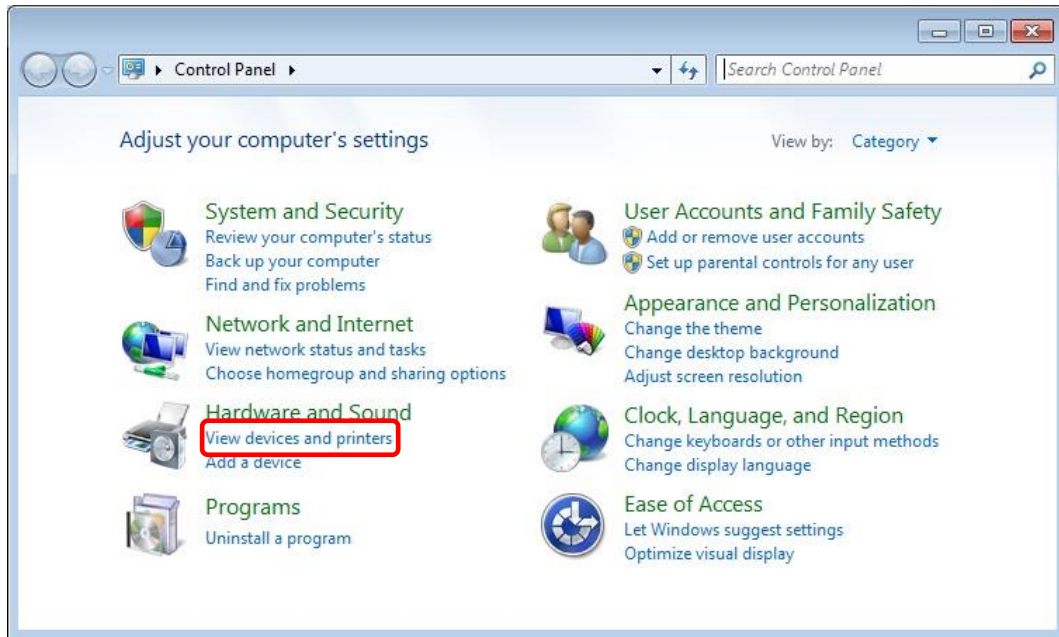


Fig 1.13 Control Panel

Check that the DP-DS80D is shown in the Devices and Printers window.

Note: In Windows 8 and 10, DP-DS80D icon does not appear if the printer is offline (if the printer with the power on is not connected).

Now, installation of the DP-DS80D printer driver is complete.

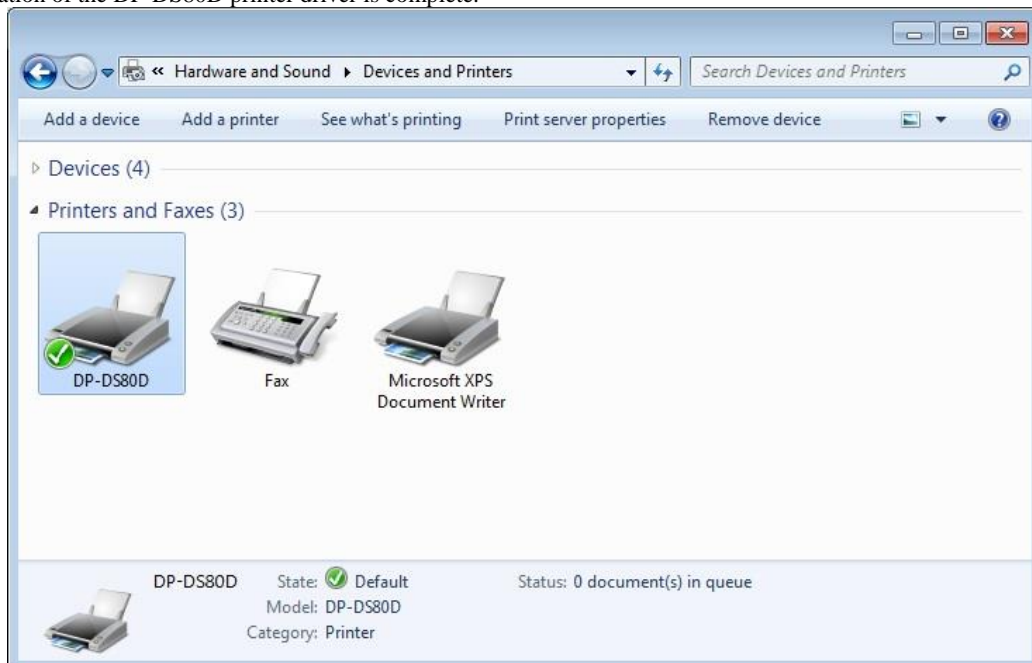


Fig 1.14 Devices and Printers window

After installation of the printer-driver is complete, be sure to reboot the computer.

If the DP-DS80D printer driver installation was unsuccessful, the message “Device driver software was not successfully installed” will appear above the task bar.



Fig 1.15 Driver Not Installed message

By clicking on this message, the “Driver Software Installation” window will be opened, and the message “Device driver software was not successfully installed” will appear. Click on the “Close” button.

(If the “Driver Software Installation” window is shown from the start of installation, the message above will not be shown.)

If the driver installation was unsuccessful, refer to the next section “1.4 Installing a Driver for an Unspecified Device” and install the printer driver.

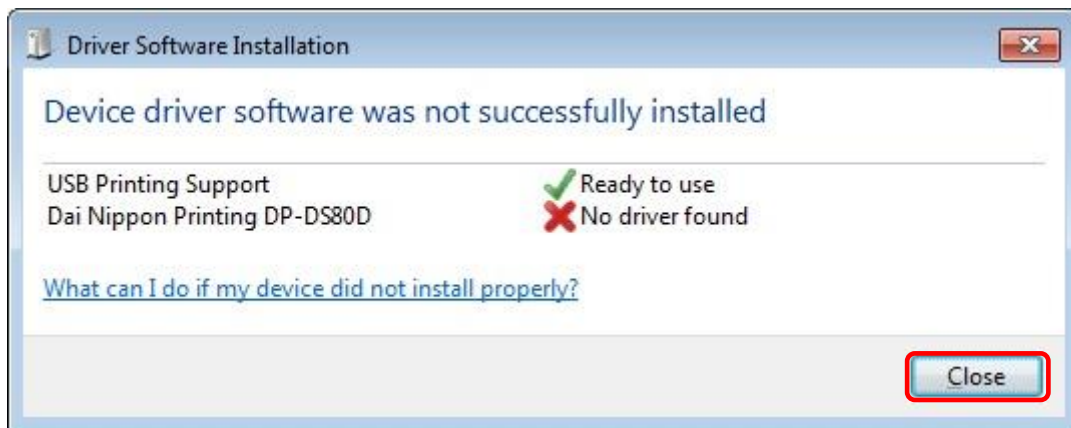


Fig 1.16 If the Driver is not installed successfully

1.4 Installing a Driver for an Unspecified Device

Before installing the driver package, connect the printer (with power ON) to the computer, to create an "Unspecified" device in the "Devices and Printers" window. Using this method, the printer driver can be installed as follows.

Also, when a driver is not installed correctly but the "Unspecified" device is created by the method of connecting a printer after installing the driver package of usual printer driver installation procedure, you can install the driver using the following method.

1. Installing the Driver Package

If the driver package has not been installed yet, follow the procedure shown in "1.2 Installing the Driver Package".

When the driver package has been installed, installation of the printer driver for the Unspecified device may be completed automatically.

2. Installing a driver for an Unspecified device

In the "Unspecified" device of the "Devices and Printers" window, do the right click of the "Photo Printer", and click on the "Troubleshoot" from pull-down menu.

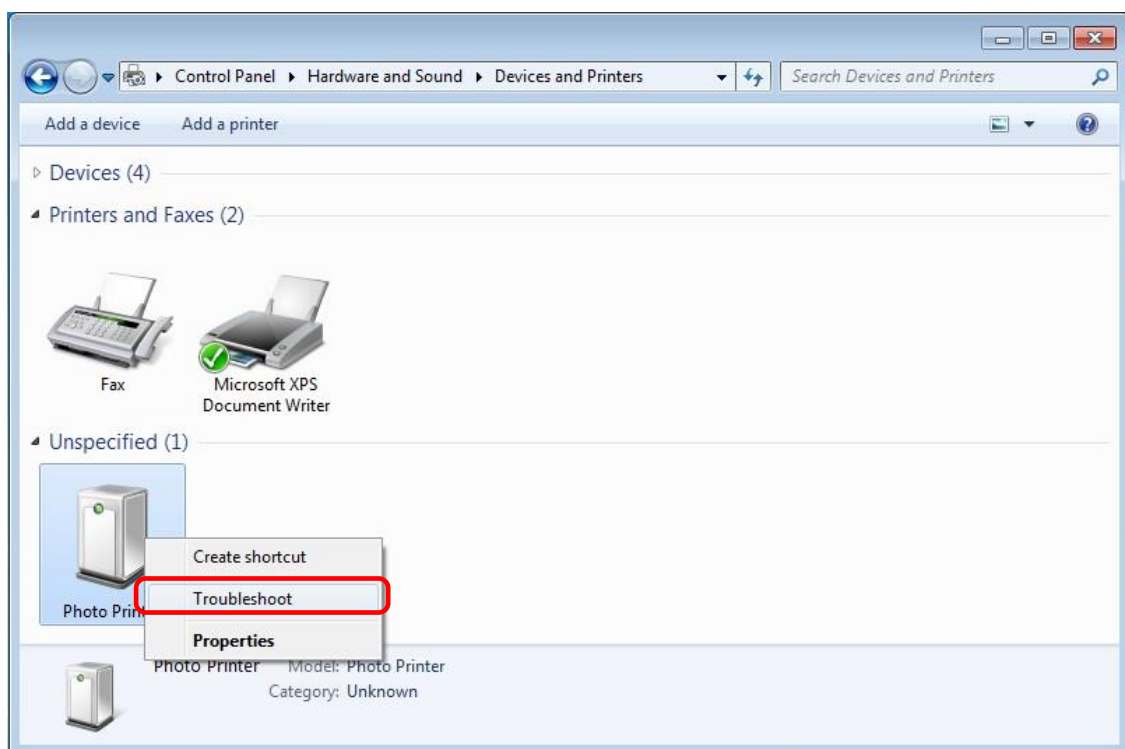


Fig 1.17 Photo Printer as an unspecified device

When the “Install a driver for this device” window appears, click on “Apply this fix”.
It will automatically search for the driver and installation is started.

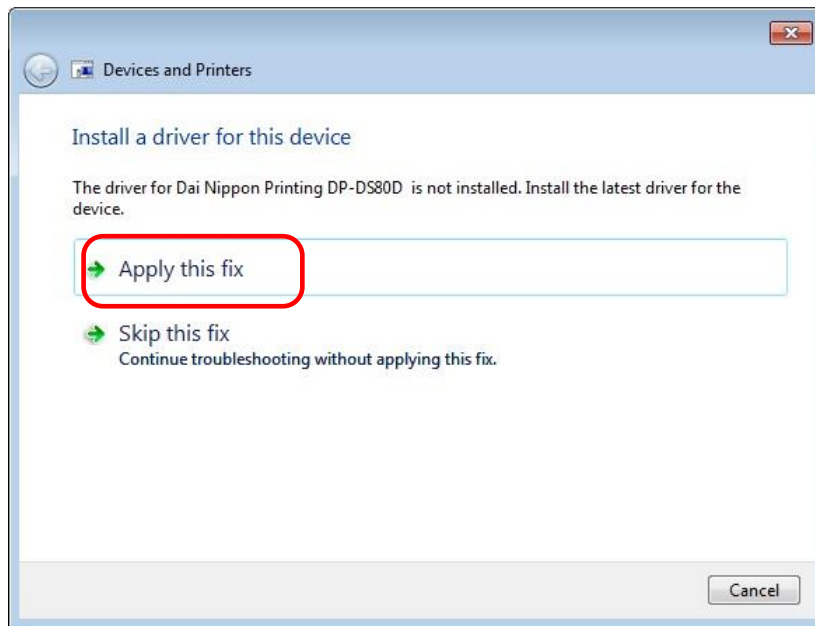


Fig 1.18 Applying the Fix

When the driver has been installed, “Troubleshooting has completed” will appear. Click on “Close the troubleshooter” to end the troubleshooting.

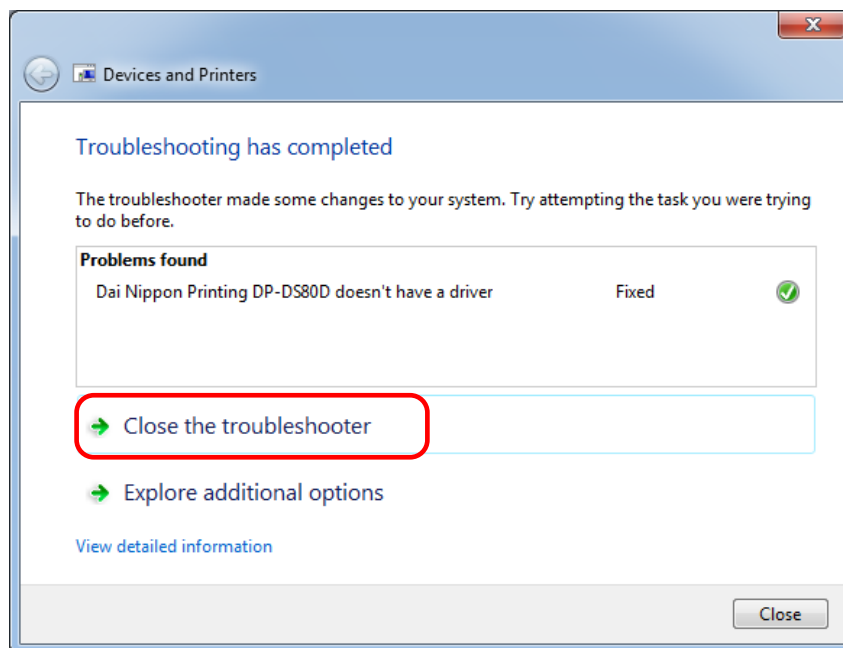


Fig 1.19 Completion of Troubleshooting

Check that the DP-DS80D is displayed in the “Devices and Printers” window.

Note: In Windows 8 and 10, DP-DS80D icon does not appear if the printer is offline (if the printer with the power on is not connected).

Now, the DP-DS80D Printer Driver installation is complete.

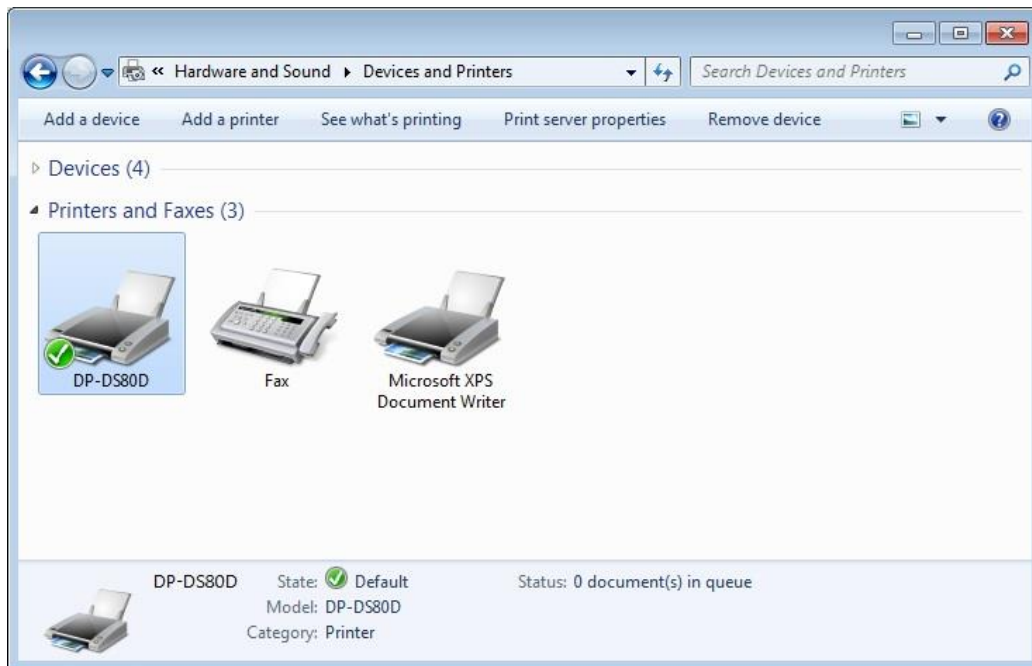


Fig 1.20 Devices and Printers

After installation of the printer-driver is complete, be sure to reboot the computer.

Chapter 2 Properties

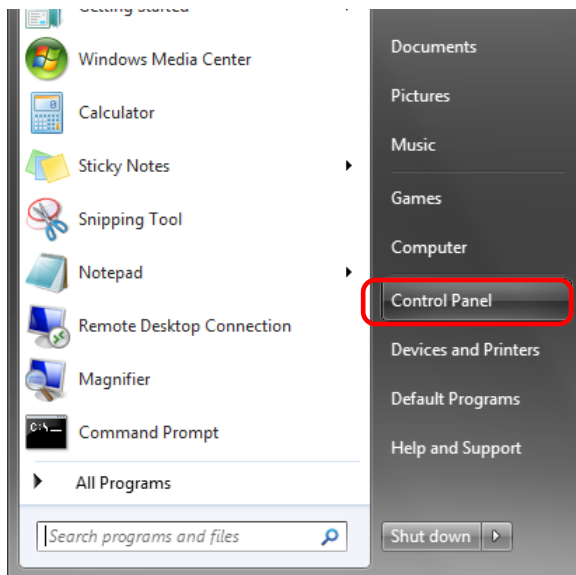
Various printer settings can be made using the DP-DS80D Driver properties. Before operation, be sure to have a good understanding of the contents. Login by administrator authority is required for operation. Depending on application of the use, operation from print setting of the application is necessary.

2.1 Opening Printer Properties

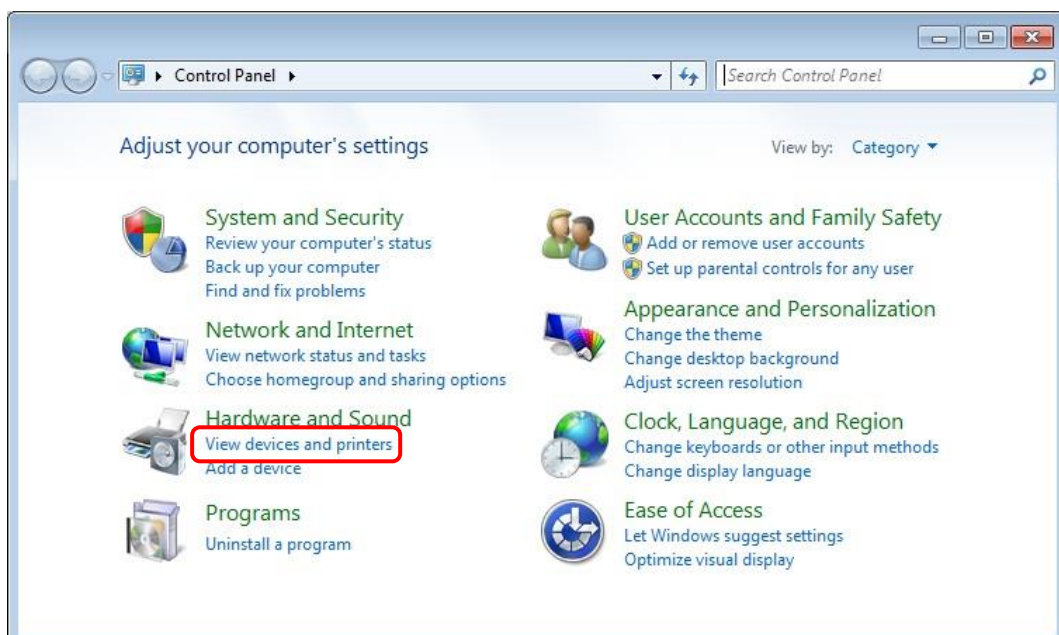
1. Click Start ⇒ Control Panel ⇒ open the control panel

In Windows 8, Right click on the Start screen => All apps => Control Panel => open the control panel.

In Windows 10, right click the Start, and then click "Control Panel" to open the Control Panel.

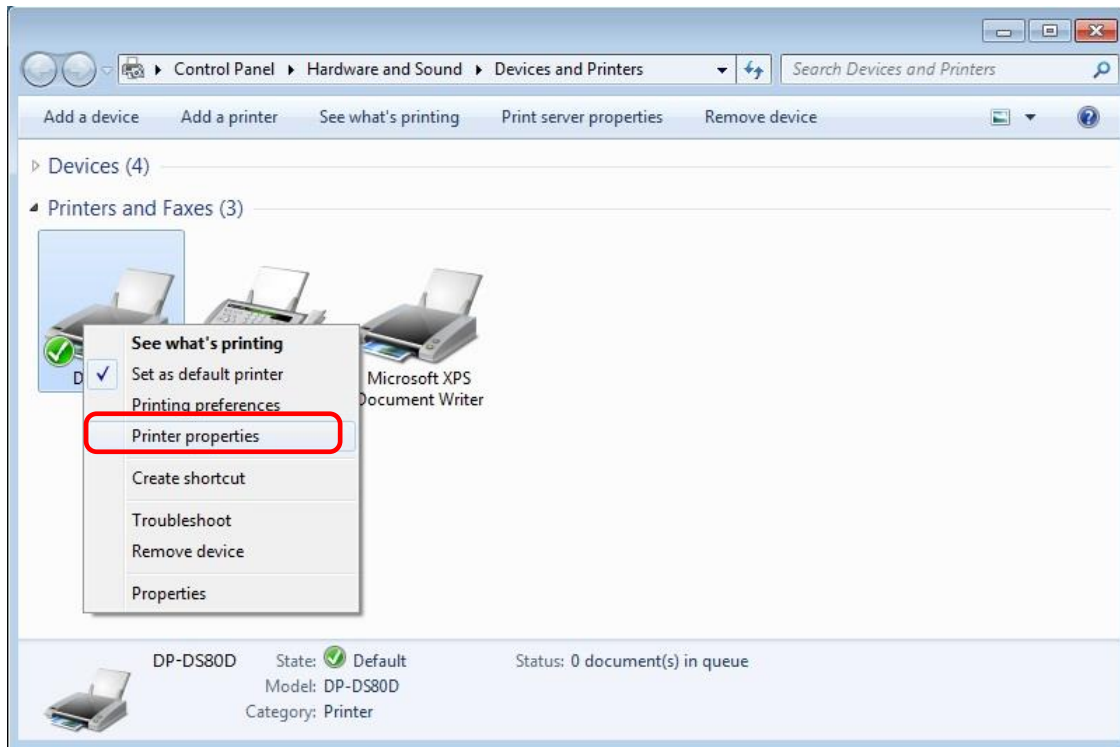


2. In the control panel, select View devices and printers ⇒ open the Devices and Printers window

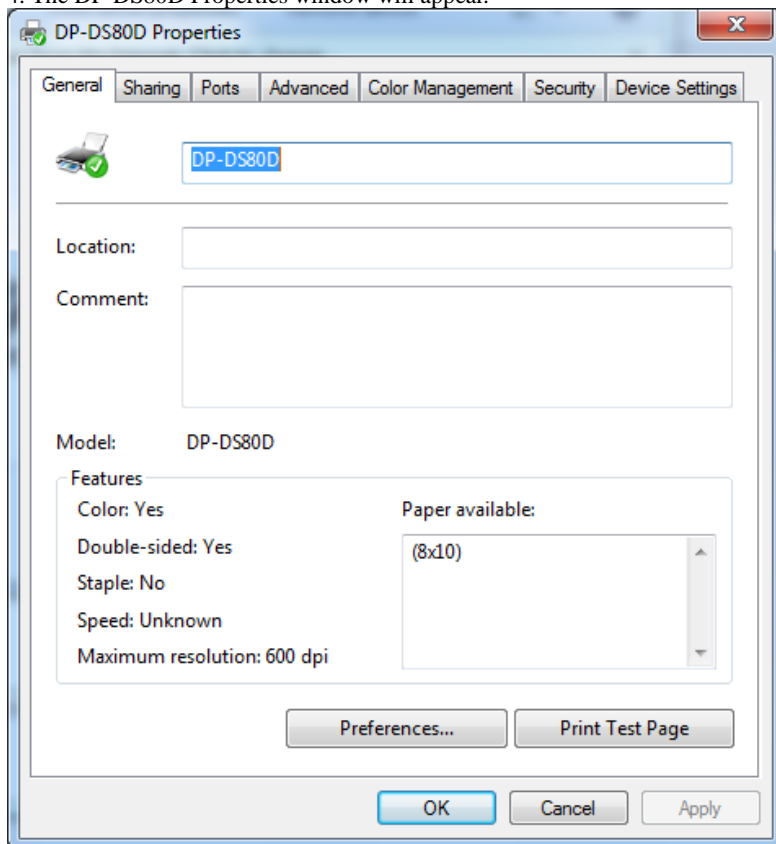


3. Right-click on the DP-DS80D icon, and from the pull-down menu select Printer properties ⇒ open the Properties window

Note: In Windows 8 and 10, DP-DS80D icon does not appear if the printer is offline (if the printer with the power on is not connected).



4. The DP-DS80D Properties window will appear.



2.2 Explanation of Print Setting Functions

From the Properties window, by selecting Preferences you can make various print settings.

2.2.1 Layout

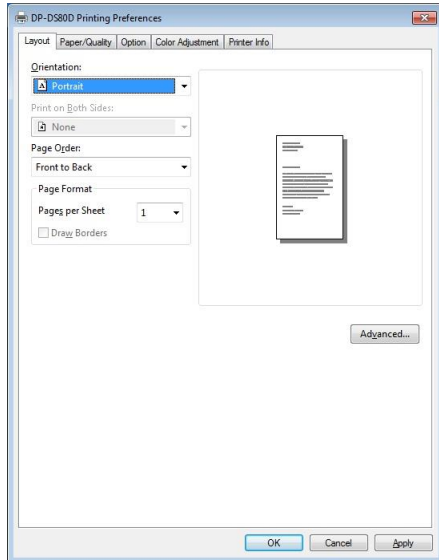


Fig 2.2.1 Layout tab

Orientation

Assign print orientation as vertical or horizontal.

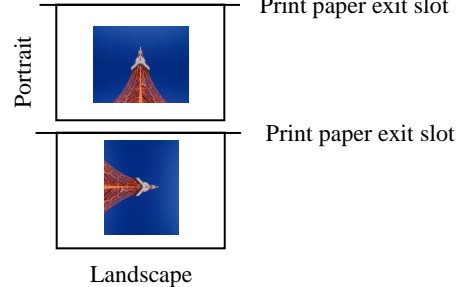
Output images of the original image without rotation are shown at the right.



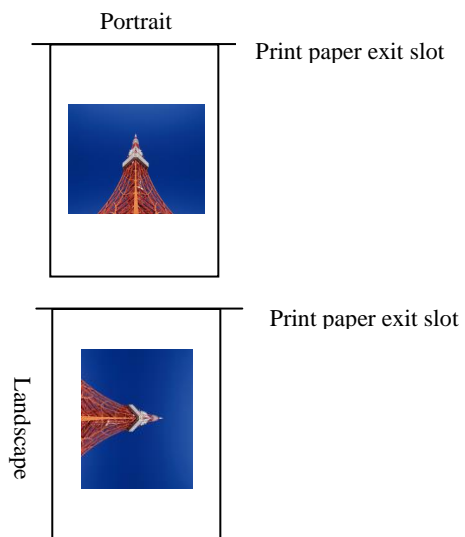
Original image orientation

Output image depending on print direction

Ex.) For (8x5), (8x6)



For (8x10), (8x12)



Duplex Printing

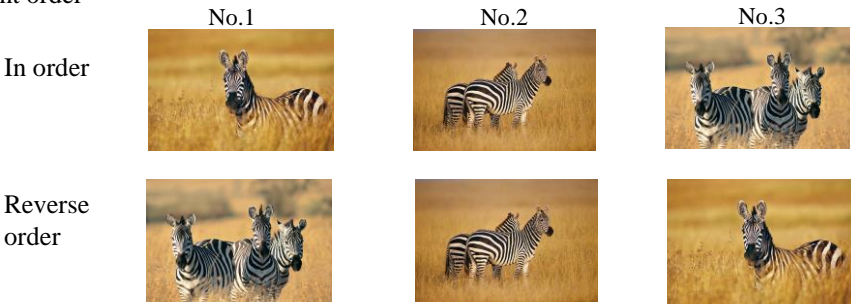
This designates whether the duplex printing is long-edge or short-edge orientation, or is Off. If cut paper (tray) is selected in the Paper Supply Method tab in “2.2.3 Paper/Quality”, long-edge/short-edge orientation duplex printing can be selected.

Long-edge Duplex printing is carried out on the long-edge orientation.

Short-edge Duplex printing is carried out on the short-edge orientation.

Page Order

When printing multiple images in the application, you can set the order.
Ex.) Print order



Pages per Sheet

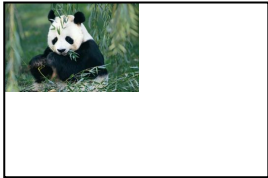
Prints the designated fractional size. In most situations, set “1”.
(When set to 1 except, please use by the print quality setting to 300x300dpi or 600x600dpi.)

Ex.) Fractional size

1 (Whole)



4 (Quarter-size)



9 (One-ninth size)



2.2.2 Advanced Options

By selecting [Advanced] in the Layout window, various settings can be made using Advanced Options.

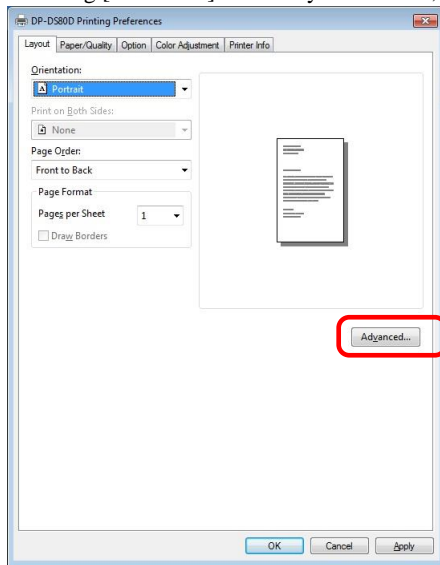


Fig 2.2.2.1 Advanced Settings

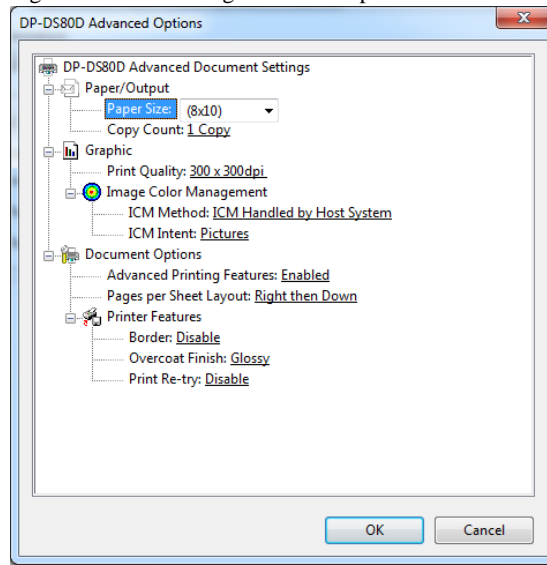


Fig 2.2.2.2 Advanced Options tab

Paper Size

You can designate the paper size. Please match the paper size to the media size with which the printer is equipped

With the DP-DS80D, the paper sizes that can be designated with the roll paper / cut paper (tray) selection in “2.2.3 Paper/Quality” differ as shown in the table below.

○ : Can be selected

Paper Size	Roll paper	Cut paper
(5x3.5)	○	
(5x7)	○	
(6x4)	○	
(6x4)x2	○	
(6x8)	○	
(6x9)	○	
(8x10)	○	○
(8x12)	○	○
(8x4)	○	○
(8x4)x2	○	○
(8x4)x3	○	○
(8x5)	○	○
(8x5)x2	○	○
(8x5)_(8x4)	○	
(8x6)	○	○
(8x6)x2	○	○
(8x6)_(8x4)	○	
(8x6)_(8x5)	○	
(8x8)	○	○
(8x8)_(8x4)	○	
A4Length	○	
(8x10.50)		○
(8x10.75)		○

Copy Count

You can designate the number of times an image will be printed.

Print Quality

You can designate the print quality. Please match the print quality to the printer settings.

Print Quality	Function
300 x 300dpi	Printing in the high-speed mode
300 x 600dpi	Printing in the high-quality mode * If the application can not set an asymmetric aspect resolution, please set the 600x600dpi. *When you execute the "Print Test Page" in printer properties in Windows 8 and 10, depending on the specifications of the OS, is printed the aspect ratio of the printer mark is different.
600 x 600dpi	Printing in the high-quality mode (Printer driver converts to 300x600dpi data, and sends it to the printer.)

ICM Method

ICM Method	Function
ICM Disabled	2.2.4 Synchronous with "Color Management: None" in paper option.
ICM Handled by Host System	2.2.4 Synchronous with "Color Management: ICM" in paper option. Performs color management with the driver.
ICM Handled by Printer	This is the same as setting "ICM Handled by Host System".

ICM Intent

This designates the rendering method when using ICM. Always have the ICC profile for the DP-DS80D set to "Picture". Please do not use it at other settings.

Advanced Printing Features

Always have it set to "Enabled". Please do not use it at other settings.

Pages per Sheet Layout

The layout direction of a picture is specified, when Pages per Sheet setting is multiple pages per sheet.

Border

Synchronous with the border option in the paper option.

Overcoat Finish

The overcoat finish for the printed surface can be selected from the following two types.

Overcoat Finish	Function
Glossy	This finishes the print with a glossy surface.
Matte	This finishes the print with a matte (non-glossy) surface.

Change the printer of the version corresponding to Overcoat Finish and a non-corresponded version, and when you use it by connecting it to the same USB port, when you change printers, reboot the computer.

Print Re-try

Depending on the version being used, "Disable" may be the only option

This sets up whether print data in a printer buffer when the error of a printer occurs is printed after error recovery, or it does not print.

Print Re-try	Function
Disable	Printing data in a printer buffer is cleared in the case of a printer error. After an error recovery, the cleared image data must be re-sent. When using an application that has an error recovery function, select this option.
Enable	Printing data in a printer buffer is held in the case of a printer error. After an error recovery, the print process resumes with the saved data. However, if the power is turned OFF, the data will not be saved.

Change the printer of the version corresponding to Print Re-try and a non-corresponded version, and when you use it by connecting it to the same USB port, when you change printers, reboot the computer.

According to the contents of a printer error, the power supply of a printer needs to be re-switched on for error recovery. In this case, it is not dependent on a setup of Print Re-try, and printing data in a printer buffer is cleared. Operation by Print Re-try setup in each error is shown below.

Error Re-try Function for Duplex Printing

Contents of the error	Print Re-try setting is “Disable”		Print Re-try setting is “Enable”	
Side the Error Occurs On	Front	Back	Front	Back
Paper End	Please resend picture data not printed after error recovery.	-	Printing processing is resumed from the data currently held in the printer buffer after error recovery. When paper initialization operation is run, it is printed after the paper initialization operation.	-
Ribbon End		Regardless of Print Re-try settings, once the error is resolved, printing processing is resumed from data currently held in the printer buffer.		Regardless of Print Re-try settings, once the error is resolved, printing processing is resumed from data currently held in the printer buffer.
Cover Open		After the error is resolved, resend the print data including the front image.		If the error occurs on the back side, printing of the back will continue after the error is resolved. In cases where media trouble prevents the delivery of normal prints, such as paper jam, resend the image data for both sides of the print.
Paper Jam (*1)				
Ribbon Error (*1)				
Paper Definition Error				
Scrap Box Error				
Data Error	Error recovery requires that the power supply of the printer needs to be turned OFF. Therefore, print data in the printer buffer is cleared regardless of the setup of the Print Re-try function.	Because resolution of the error requires the printer to be turned OFF, the image data in the buffer will be cleared regardless of Print Re-try settings. Also, even though the front side is finished, it will be aborted, so after the printer is rebooted, resend the image data for both sides of the print.	Error recovery requires that the power supply of the printer needs to be turned OFF. Therefore, print data in the printer buffer is cleared even if the Print Re-try function is set to "Enable". Please resend the picture data not printed after the printer is rebooted.	Because resolution of the error requires the printer to be turned OFF, even if Print Re-try is enabled, the turning OFF of the printer will clear the data from the buffer. Also, even though the front side is finished, it will be aborted, so after the printer is rebooted, resend the image data for both sides of the print.
Head Voltage Error				
Head Position Error				
Power Supply Fan Stop				
Cutter Error				
Abnormal Head Temp.				
Abnormal Media Temp.				
Ribbon Tension Error				
RFID Module Error				
Abnormal motor Temp.				
System Error	Please resend the picture data not printed after the printer is rebooted.			

*1: After an error stop, a paper or a ribbon should perform removal work of an error factor according to a printer user's manual.

2.2.3 Paper/Quality

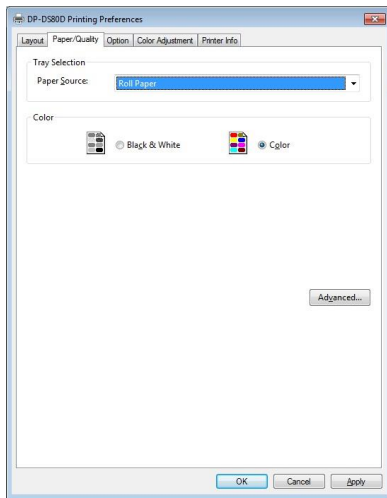


Fig 2.2.3 Paper/Quality tab

Paper Source

Either Roll paper or Cut paper (tray) can be selected. Duplex printing can only be done when Cut paper (tray) is selected. If a paper size valid for only either Roll paper or Cut paper (tray) is selected in the paper size setting in “2.2.2 Advanced Options”, then the Paper Supply Method setting will be disabled.

Color Please set to color print. Do not use for black and white printing.

2.2.4 Option

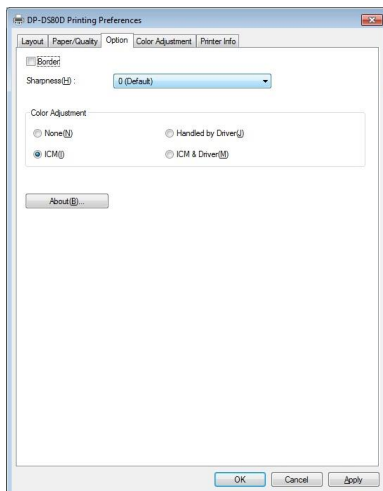


Fig 2.2.4.1 Paper option tab

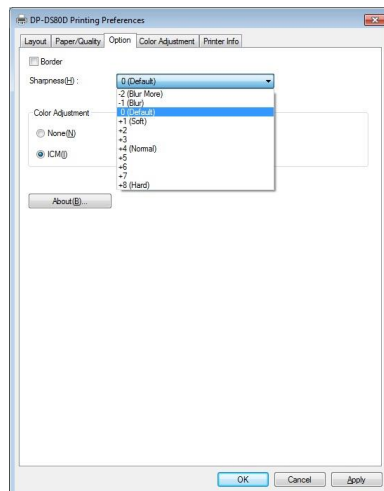


Fig 2.2.4.2 Sharpness setting

Border

Designates yes or no for border (check means with border). Synchronous with border in the Advanced Settings.

Sharpness

Processes for 11 sharpness levels (Fig 2.2.4.2). 0 (Initial setting) means there is no sharpness processing. Minus(-) blurs the image, and plus(+) increases the sharpness.

Color Adjustment

None

Synchronous with the ICM Method in the Advanced Settings. Checking this item disables ICM and the Color Adjustment tab, and color management does not occur from the driver.

Handled by Driver

Checking this item disables ICM and [2.2.5 Color Adjustment](#) is enabled. The adjustment values for gamma, brightness, contrast, and chroma are shown.

ICM

Synchronous with the ICM Method in the Advanced Settings (ICM Handled by Host System). Checking this item enables color management from the driver.

ICM & Driver

If you check this, ICM (color management) and color adjustment will be enabled.

About

Displays the driver version.

2.2.5 Color Adjustment

If you check Handled by Driver in 2.2.4 Option, the respective color adjustment values in the Color Adjustment tab are reflected in the image.

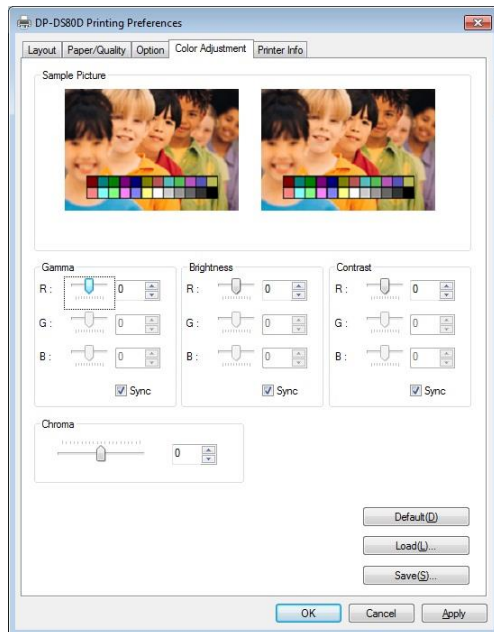


Fig 2.2.5 Color Adjustment tab

Setting ranges in the Color Adjustment tab are as follows:

Adjustment Item	Adjustment Value
Gamma	-100(dark) ~ 100(light) (0 means no adjustment, Gamma 2.0 ~ 0.5) Adjusts the density of the highlights in the image. The greater the gamma value, the brighter the highlights. Synchronous check box ON : Sets RGB at the same value OFF:Sets RGB at a different value
Brightness	-100(dark) ~ 100(light) (0 means no adjustment) Adjusts the brightness of the image. The larger the value, the greater the overall brightness of the image. Synchronous check box ON :Sets RGB at the same value OFF:Sets RGB at a different value
Contrast	-100(weak) ~ 100(strong) (0 means no adjustment) Adjusts the contrast of the image. The larger the value, the greater the contrast. Synchronous check box ON : Sets RGB at the same value OFF: Sets RGB at a different value
Chroma	-100(weak) ~ 100(strong) (0 means no adjustment) Adjusts the color saturation of the image.

2.2.6 Printer Information

When the Printer Information tab is opened, the printer status can be checked.

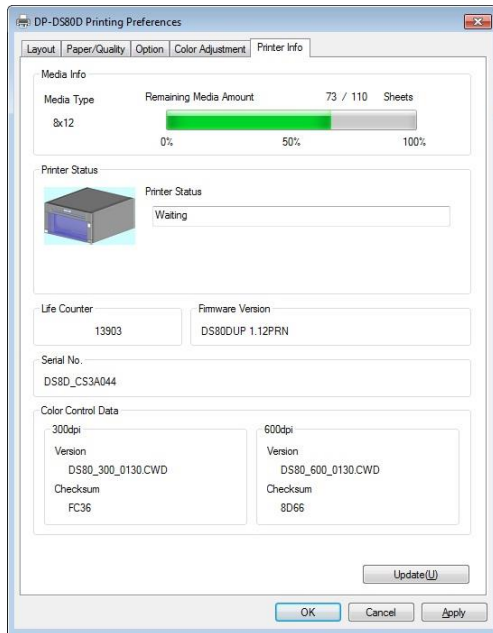


Fig 2.2.6 Printer Information tab

Display	Contents
Media Type	This displays the type of ribbon that is set in the printer.
Media Quantity	This displays the quantity of sheets remaining on the ribbon.
Printer Status	This displays the printer status. Information displayed is as below:
Life Counter	This displays the life counter of printer.
Firmware Version	This displays the firmware version of printer.
Serial No.	This displays the serial number of printer.
Color Control Data	This displays the color control data version and checksum.

Printer Status	Recovery Method
Off-line	Connect the printer to the computer, and turn the power ON.
Waiting	
Printing	
Head Cooling	Please wait. Printing will restart automatically.
Door Open	Close the printer door.
Paper End	Set new paper media.
Ribbon End	Set new ribbon media.
Paper Jam	Remove the jammed paper and rest it correctly.
Ribbon Error	Reset the ribbon correctly.
Paper Size Setting Error	Check the paper size setting and the ribbon size.
System Error	Reboot the printer and computer. If it doesn't recover after rebooting, contact the service center.
Unit Paper Jam Supply area	Reboot the printer. The paper will be ejected automatically. Please refer to the Duplex Unit User's Manual for details
Unit Paper Jam Feed area	
Unit Paper Jam Shell area	
Unit Paper Jam Delivery area	
Unit Tray Out	Set the cut paper tray.
Unit Cover Open	Close the unit cover.
Unit Hardware Error	Reboot the printer and computer. If it doesn't recover after rebooting, contact the service center.

2.3 Default Values for Various Settings

Default values for each option (at the time of installation) are shown below. If the printer driver does not work correctly after changing the options, please return the options to the default settings.

Note) According to the Service Pack and use environment of OS, the default value at the time of installation may differ from the following chart.

Tab	Options			Default	
Layout	Orientation			Portrait	
	Print on Both Sides			None	
	Page Order			Front to Back	
	Pages Per Sheet			1	
Paper/Quality	Paper Source			Roll Paper	
	Color			Color	
Option	Border			Disable	
	Sharpness			0 (Default)	
	Color Adjustment			ICM	
Color Adjustment	Gamma			0	
	Brightness			0	
	Contrast			0	
	Chroma			0	
Advanced (Click [Advanced] button of Layout tab)	Paper/Output	Paper Size		8 x 10	
		Copy Count		1	
	Graphic	Print Quality		300 x 300dpi	
		Image Color Management	ICM Method		ICM Handled by Host System
			ICM Intent		Pictures
	Document Option	Advanced Printing Features		Enable	
		Pages per Sheet Layout		Right then Down	
		Printer Features	Border		Disable
			Overcoat Finsh		Glossy
			Print Re-try		Disable

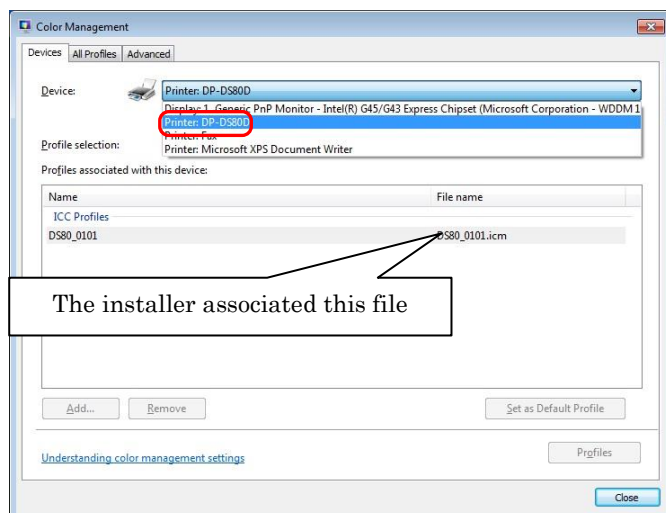
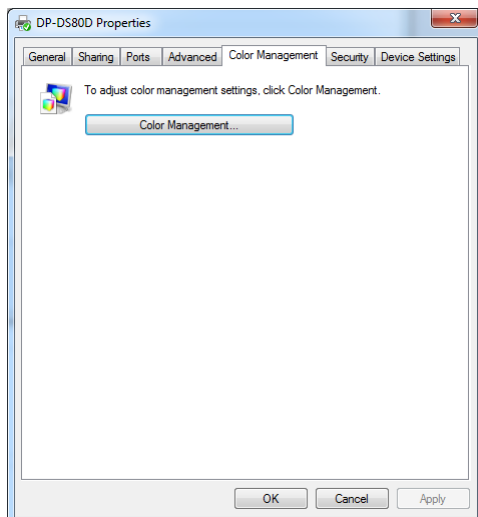
Chart 2.3 Print Setting Default Values

2.4 Color Management

In [Color Management], this designates the color profile. Default at installation associates [DS80 _xxxx].
xxxx is a 4-digit number that refers to the version.

Step 1. Select “Color Management” tab in “Printer Properties”, and click on “Color Management” button.

Step 2. Choose printer: DP-DS80D from a device.



2.5 Image Size

Depending on the paper size designated at the driver, the image size and dot count will be as follows.

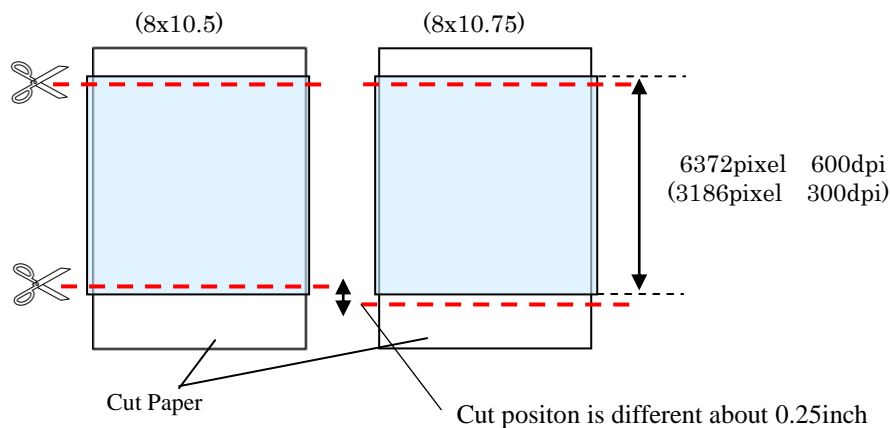
Model	Paper Size	Size (inch)	Print Area (mm)	300 x 300 DPI Dot amount	300 x 600 DPI Dot amount
DP-DS80D	(5x3.5) ※1	3.5"x 5"	92.1 x 131.1	1088 x 1548	2176 x 1548
	(6x4) ※1	4"x 6"	105.0 x 156.1	1240 x 1844	2480 x 1844
	(5x7) ※1	5"x 7"	131.1 x 181.0	1548 x 2138	1548 x 4276
	(6x8) ※1	6"x 8"	156.1 x 206.2	1844 x 2436	1844 x 4872
	(6x9) ※1	6"x 9"	156.1 x 232.0	1844 x 2740	1844 x 5480
	(8x4)	8"x 4"	207.3 x 104.6	2448 x 1236	2448 x 2472
	(8x5)	8"x 5"	207.3 x 130.0	2448 x 1536	2448 x 3072
	(8x6)	8"x 6"	207.3 x 155.4	2448 x 1836	2448 x 3672
	(8x8)	8"x 8"	207.3 x 206.0	2448 x 2436	2448 x 4872
	(8x10)	8"x 10"	207.3 x 257.0	2448 x 3036	2448 x 6072
	(8x10.50) ※2	8"x 10.5"	207.3 x 269.7	2448 x 3186	2448 x 6372
	(8x10.75) ※2	8"x 10.75"	207.3 x 269.7	2448 x 3186	2448 x 6372
	A4 Length ※1	8"x 11.7"	207.3 x 297.0	2448 x 3544	2448 x 7088
	(8x12)	8"x 12"	207.3 x 307.8	2448 x 3636	2448 x 7272

※1 Roll paper only

With the DP-DS80D printer, the paper size (output size) can be designated as less than 8 inches, but the media used will be the inch width media.

※2 Cut paper only

The image dot counts for (8x10.5) and (8x10.75) are the same. The image that is output differs as shown below.





















2.6 Print Orientation

The relationship between application-created image and printed image(output orientation) by the driver settings(Layout orientation) is as followed table.

These are limited by that original image is not rotated by the application and enlarged or scale downed within the image size that is selected from [2.5 Image Size](#) table.

- ◆The relationship between application-created image and printed image when performing simplex printing as affected by the driver settings.

Original Image	Driver setting				
	Orientation	Paper Size (8x4)、(8x5)、(8x6)		(8x10)、(8x12)	
		Application-created image	Print (Feed dir.↓)	Application-created image	Print (Feed dir.↓)
	Portrait				
	Landscape				
	Portrait				
	Landscape				

When performing Duplex printing, the Driver setting (Paper Size, Print Direction, Duplex-printing Print Orientation) affects the relationship between the application-created image and the printer's printing (front / back print direction) as shown in the next page.

◆The relationship between application-created image and printed image when performing duplex printing as affected by the driver settings ( Binding direction)

Original Image			Driver Settings											
Orientation			Paper Size (8x4), (8x5) <including multi-layout>						Paper Size (8x10), (8x10.5), (8x10.75), (8x12)					
	Front	Back	Print Dir.	Application-created image		Flip on	Print (Feed dir.↓)		Print Dir.	Application-created image		Flip on	Print (Feed dir.↓)	
				Front	Back		Front	Back		Front	Back		Front	Back
Portrait			Vert.			Long edge			Vert.			Long edge		
						Short edge						Short edge		
			Horiz.			Long edge			Horiz.			Long edge		
						Short edge						Short edge		
Landscape			Vert.			Long edge			Vert.			Long edge		
						Short edge						Short edge		
			Horiz.			Long edge			Horiz.			Long edge		
						Short edge						Short edge		

2.7 Print Method

2.7.1 Multi-layout

When the DP-DS80D is using 8x12, 8x10 size media, 2 or 3 image layout is possible.

With the printer driver paper setting, multi-image layout is made possible, and the image sizes are as follows.

Layout designation

	Driver paper setting (layout)	Image size (mm)	Remarks
Roll paper	(8x4) x 2	(207.3x104.6) x 2	
	(8x5) x 2	(207.3x130.0) x 2	
	(8x6) x 2	(207.3x155.4) x 2	
	(8x5) _ (8x4)	(207.3x130.0) x (207.3x104.6)	
	(8x6) _ (8x4)	(207.3x155.4) x (207.3x104.6)	
	(8x6) _ (8x5)	(207.3x155.4) x (207.3x130.0)	Media size 8x12 only
	(8x8) _ (8x4)	(207.3x206.2) x (207.3x104.6)	Media size 8x12 only
	(8x4) x 3	(207.3x104.6) x 3	Media size 8x12 only
Cut paper	(8x4) x 2	(207.3x104.6) x 2	
	(8x5) x 2	(207.3x130.0) x 2	
	(8x6) x 2	(207.3x155.4) x 2	Media size 8x12 only
	(8x4) x 3	(207.3x104.6) x 3	Media size 8x12 only

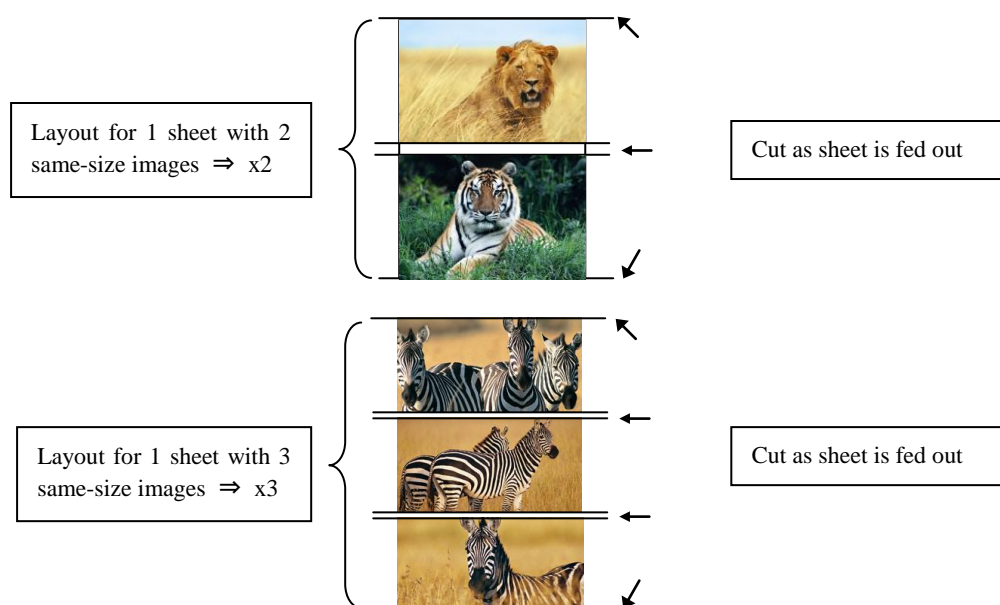
Multiple layout is possible under the following conditions.

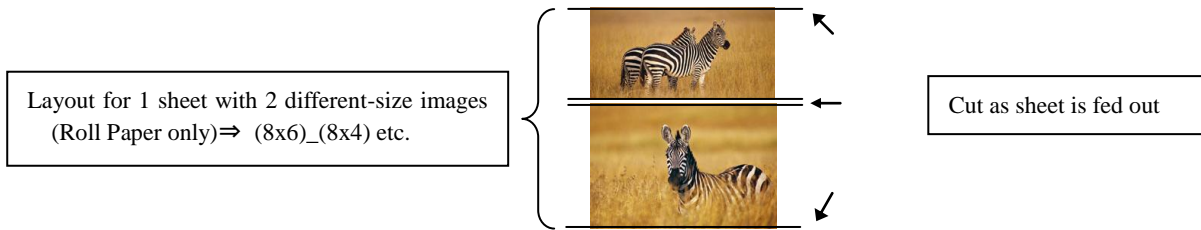
- 1.The printer driver paper size is set to one of the above sizes.
- 2.Multiple images are sent from the application.

Note) Because the multi-image layout occurs on a per job basis, this works when there are multiple images for 1 job.If you want to print the same image, be sure to send the image data for each copy to be printed.The printer prints 2 or 3 images in one operation, and the paper is cut as it is fed out.

<Multi-image layout patterns>

The following combinations are possible for the multi-image layout patterns.





(When cut paper use, the image of 2 different- size on 1 sheet can not be assigned).

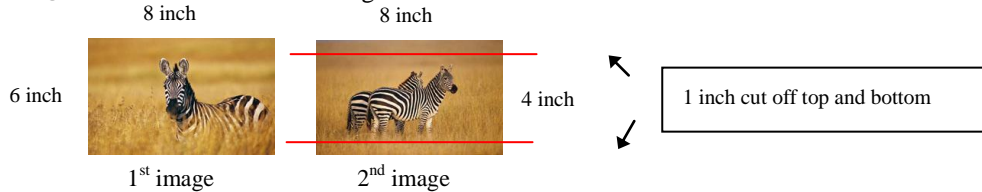
Cautions for printing 2 different-size images on one sheet

When printing 2 different-size images on 1 sheet, 1 inch will be cut off the top and bottom of the 2nd image when the image is being generated. When creating the original image, be aware of the following points.

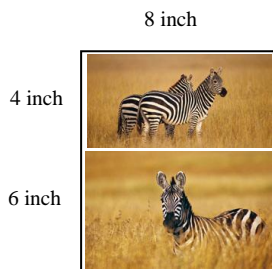
Ex.) When the layout is set for (8x6)_(8x4)

The driver creates the layout image in the order of ①, ②.

① It creates two 8x6inch images

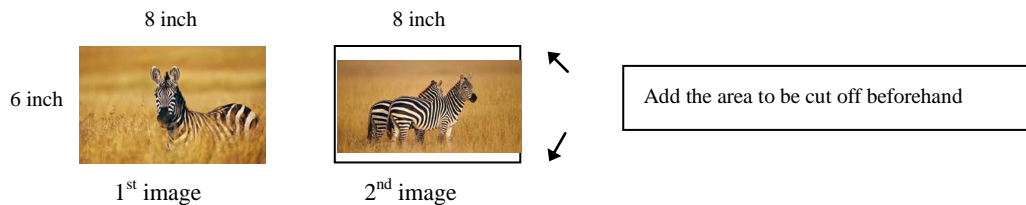


② The driver then lays out the 2 different-size images from ① as one (8x10) image and outputs it to the printer.



Ex.) Example of creating the original image.

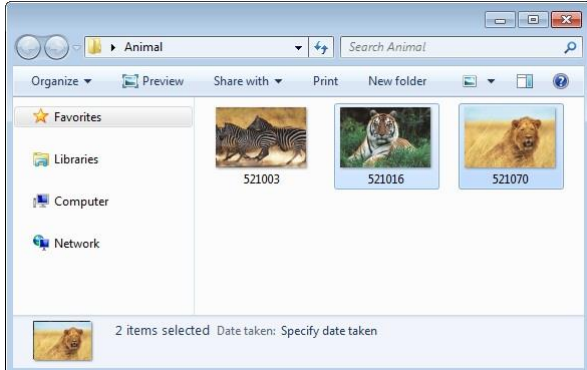
When outputting the original image to the driver, the 1st and 2nd images are created as the same size, so factor in the space that will be cut off from the 2nd image.



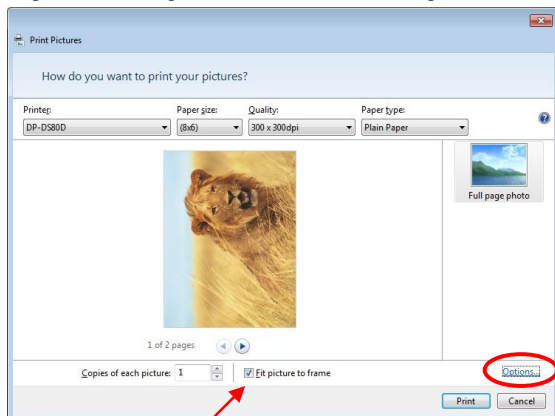
2.7.2 Example of Multi-layout application use

This is an example using Windows Explorer

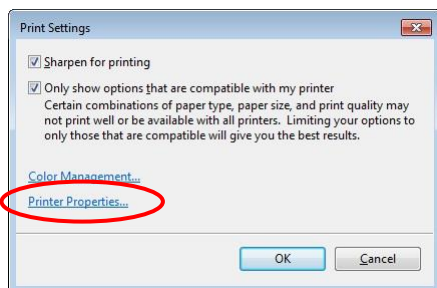
Step 1. Select 2 or more images⇒Click “Print”.



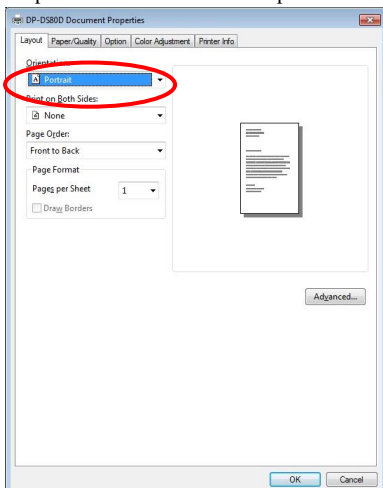
Step 2. Check “Fit picture to frame” and click “Options”.



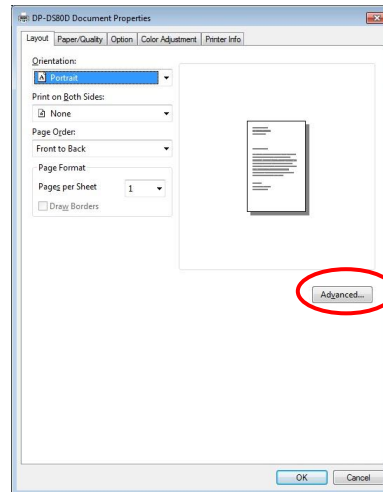
Step 3. Click on “Printer Properties”.



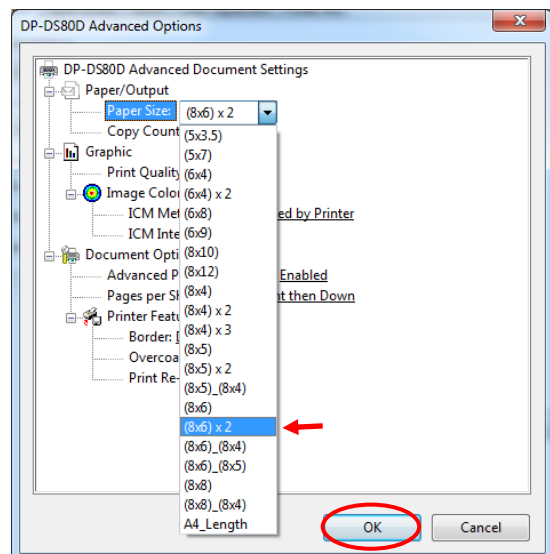
Step 4. From the “Orientation” pull-down menu, select “Portrait”.



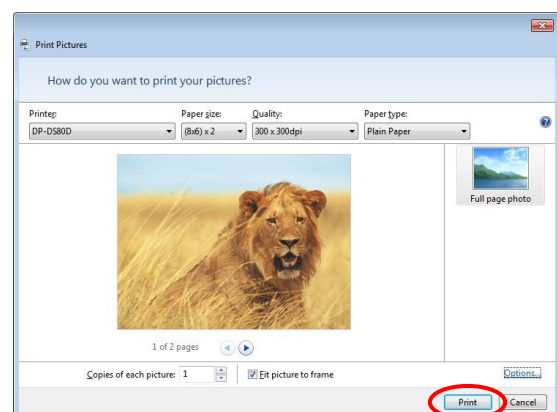
Step 5. Click on “Advanced”.



Step 6. Set the Paper Size to “(6x4)x2”. Then click “OK” on the windows from steps 6⇒5, returning to the window displayed in Step 2.



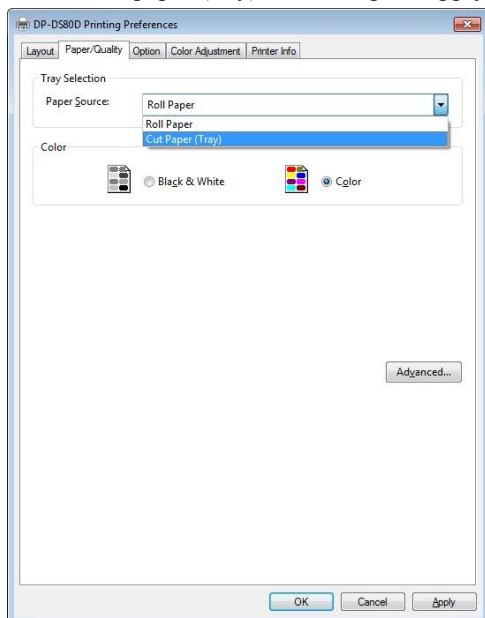
Step 7. Click on “Print”.



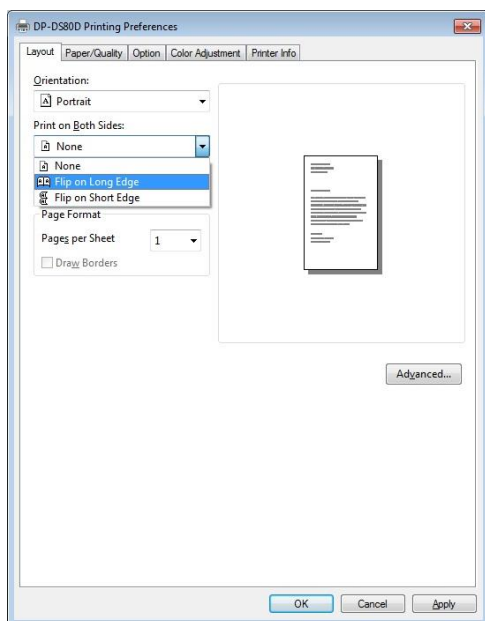
2.7.3 Duplex Printing

Duplex printing is possible on the DP-DS80D when cut paper is selected.
Duplex printing can be performed under the following conditions.

1. Select “Cut paper (tray)” in the Paper Supply Method on the “2.2.3 Paper/Quality” tab.



2. Select “Short-edge” or “Long-edge” orientation under Duplex Printing in the “2.2.1 Layout” tab.

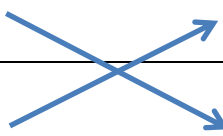


Because Duplex printing is run on a job basis, it only works when there are 2 (front and back) or more images in a single job.

When there are an odd number of images in 1 job, the back of the final page will be output as a white image. The print method is the same as in “2.7.2 Example of Multi-layout application use”.

Cautions for using Multi-layout in Duplex Printing

When using multi-layout in duplex printing, the images will be laid out as follows. If there is a remainder in transmitted images, the driver will insert empty data images into the layout. The printer will output the empty data as white images.

8x4x2 8x5x2 8x6x2	Even number of prints	image1 image2	Send on 1 job 	image 1 image 3	Front data lay out on 1 image
		image 3 image 4		image 2 image 4	Back data lay out on 1 image
	Odd number of prints (remainder of 1 print)	image 5		image 5 blank	Front data lay out on 1 image
				blank blank	Back data is blank
	Even number of prints (remainder of 2 prints)	image 5 image 6		image 5 blank	Front data lay out on 1 image
				image 6 blank	Back data lay out on 1 image
	Odd number of prints (remainder of 3 prints)	image 5 image 6		image 5 image 7	Front data lay out on 1 image
		image 7		image 6 blank	Back data lay out on 1 image

In cases as above where there is a remainder from 1 or 2 prints, if you don't want to output blank images from the printer, then you can use the application to change the multi-layout media size as shown below, and send the image data as a separate job.

8x4x2 8x5x2 8x6x2	Even number of prints	Image 1	Send on 1 job	Image 1	Front data lay out on 1 image
		Image 2		Image 3	
		Image 3		Image 2	Back data lay out on 1 image
		Image 4		Image 4	
Paper size change 8x4 8x5 8x6	Odd number of prints (remainder of 1 print)	Image 5	Send on other job	Image 5	Front data lay out on 1 image
				blank	Back data is blank
	Even number of prints (remainder of 2 prints)	Image 5	Send on other job	Image 5	Front data lay out on 1 image
		Image 6		Image 6	Back data lay out on 1 image

Chapter 3 Updating the Driver

When removing the printer driver, login with administrator right as same as when installing the driver. In order to update the printer driver, follow the steps shown below.

1. Driver Removal

- (1) Before removing the printer-driver, shut down all other applications. Also, in the “Devices and Printers” window, select the printer icon of the printer you want to remove, check the bottom of the window that there are no documents in queue, and start removal of the driver.

Note: In Windows 8 and 10, DP-DS80D icon does not appear if the printer is offline (if the printer with the power on is not connected).

If you can not connect to the printer with the power on, remove the device in the procedure on the next page.

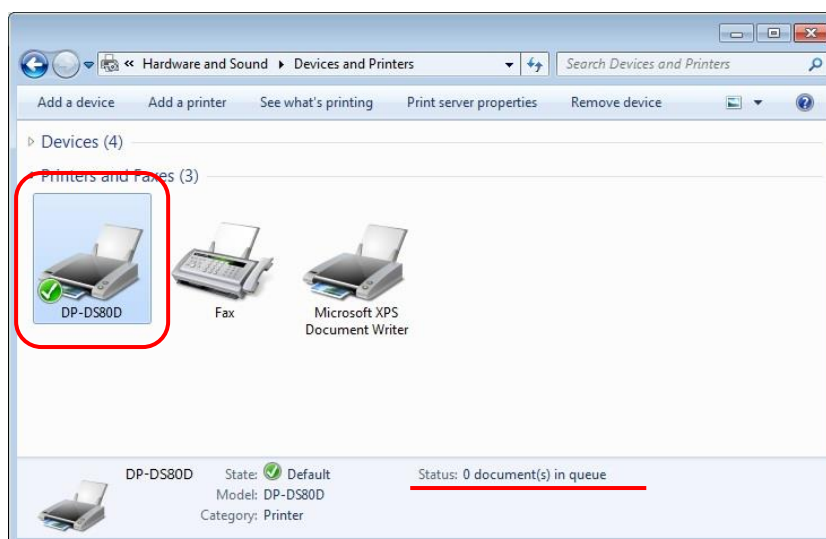


Fig 3.1 “Devices and Printers” window with the DP-DS80D icon clicked

- (2) Select “Start”–“Control Panel”, and click on “View devices and printers” in the control panel. From the “Devices and Printers” window, select the DP-DS80D printer, display the pull-down menu with the right click, and click on “Remove device”. In Windows 8, right click on the Start screen, select the right-under "All apps", select "Control Panel", click on "View devices and printers" in the Control Panel. In Windows 10, right click the Start. In the bottom right area, select "All Apps", and then select "Control Panel". In the Control Panel, click "Devices and Printers".

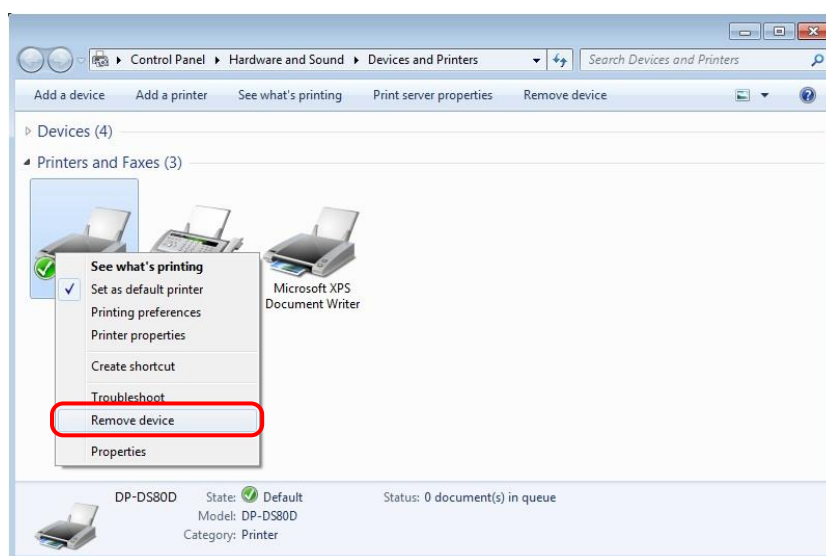


Fig 3.2 Devices and Printers window; DP-DS80D right-clicked menu

In Windows 8 and 10, DP-DS80D icon does not appear if the printer is offline (if the printer with the power on is not connected). If you can not connect to the printer with the power on, remove the device in the following procedure.

- (i) Right click an empty area of the "Devices and Printers" window, select the "Device Manager".

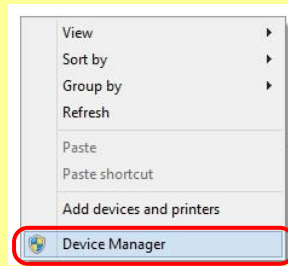


Fig 3.2.i Devices and Printers window; An empty area of the screen right clicked menu

- (ii) Click on the check "Show hidden devices" in the menu "View".

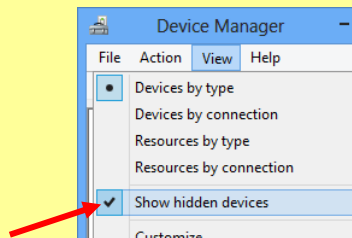


Fig 3.2.ii "Show hidden devices" menu

- (iii) Right click on the "DP-DS80D" of "Printers", select "Uninstall".

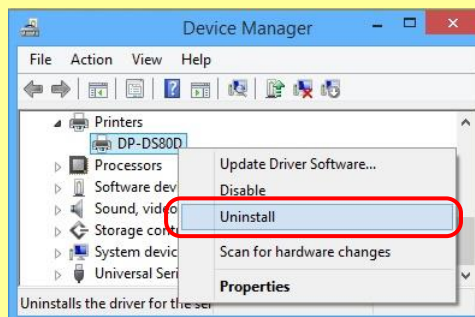


Fig 3.2.iii Devices Manager window; Printers – DP-DS80D right clicked menu

- (iv) When the "Confirm Device Uninstall" window appears, click on "OK".

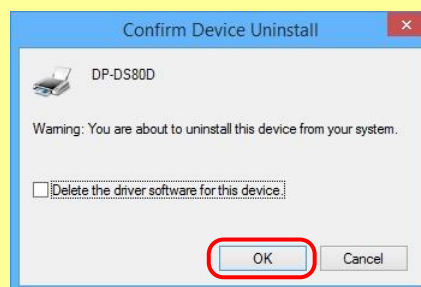


Fig 3.2.iv Confirm Device Uninstall window

(3) When “Are you sure you want to remove this device?” appears, click on “Yes”.

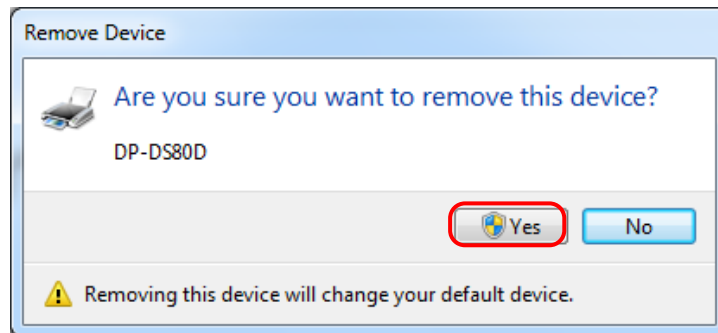


Fig 3.3 Remove device confirmation window

(4) After the DP-DS80D printer has been removed, select another printer (for example: Fax), and click on “Print server properties” in the menu bar.

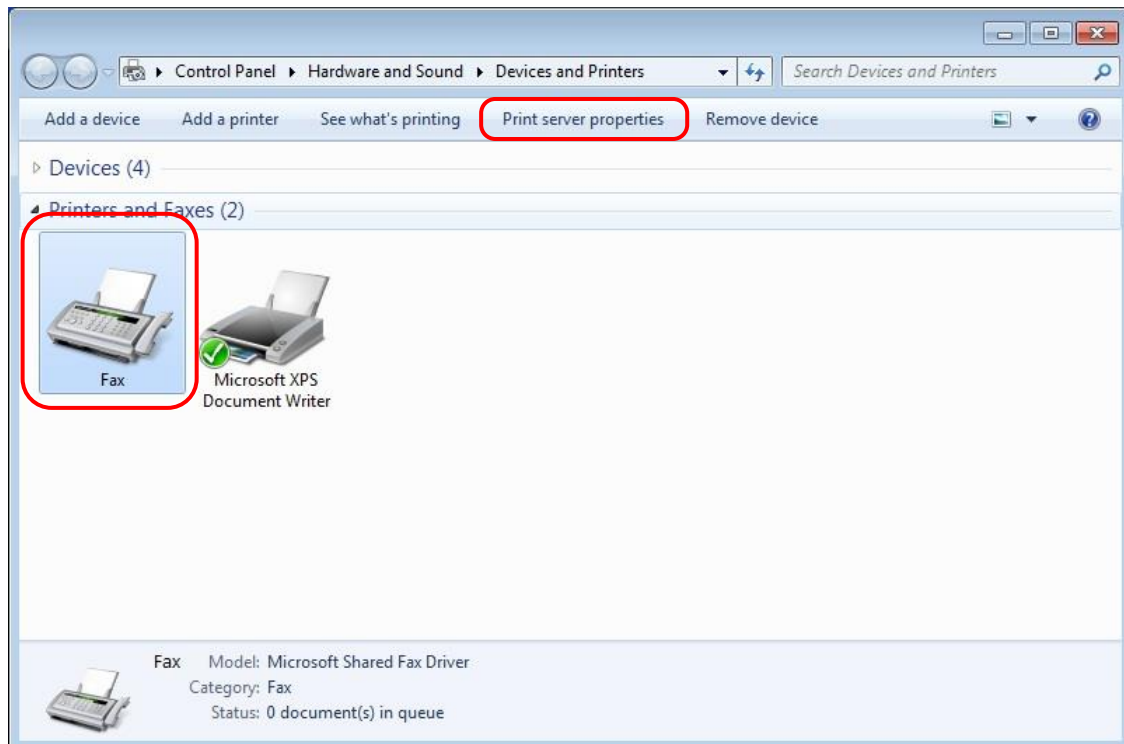


Fig 3.4 “Devices and Printers” window, showing the “Print server properties” menu

- (5) When the Print Server Properties window appears, click on the Drivers tab. From the list of installed printer drivers, select “DP-DS80D”, and click the “Remove” button.

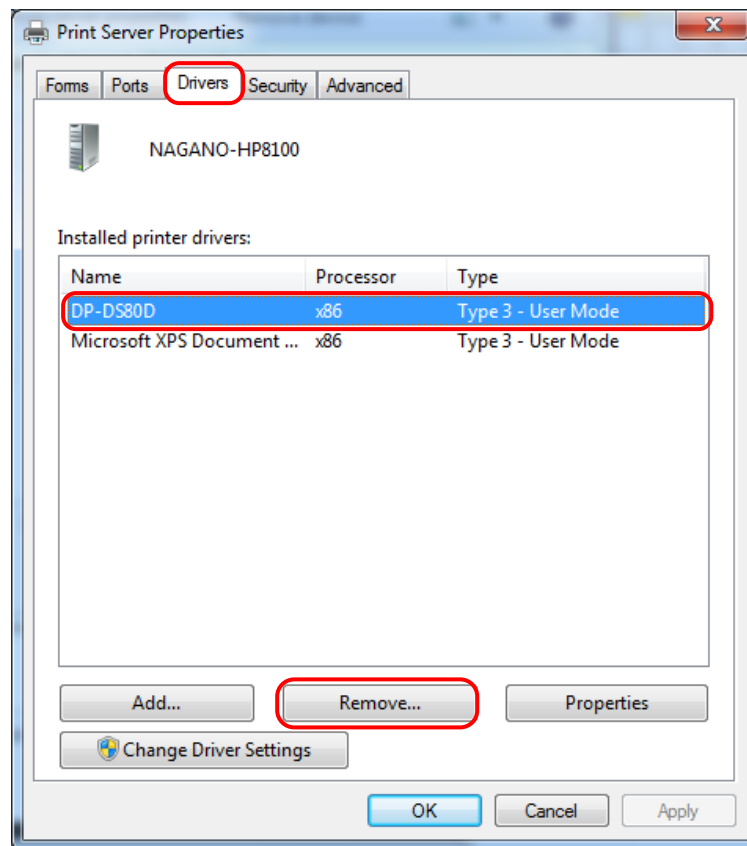


Fig 3.5 Print Server Properties window

- (6) When the Remove Driver and Package window appears, select “Remove driver only”, and click on the “OK” button. Removal of the driver package takes place in the next section “2. Uninstalling a Driver Package”.

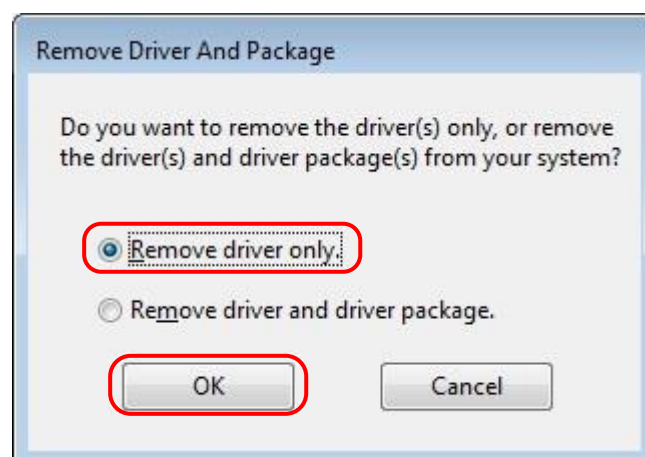


Fig 3.6 Remove Driver and Package window

(7) When the Print Server Properties confirmation window appears, click on the “Yes” button.

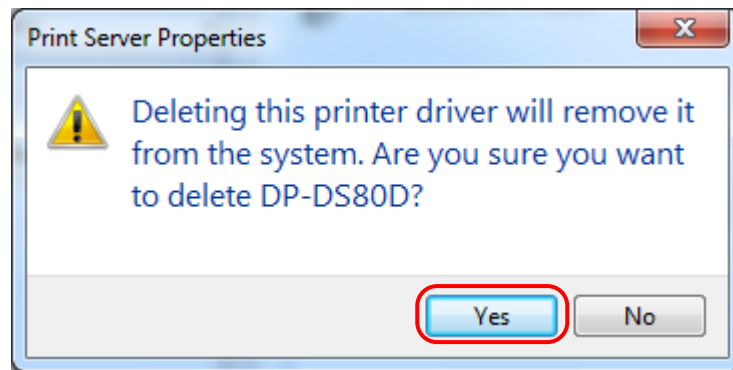


Fig 3.7 Print Server Properties confirmation window

(8) Using the Print Server Properties window, confirm that “DP-DS80D” has been removed, and click on the “Close” button. After removing the printer driver, uninstall the driver package.

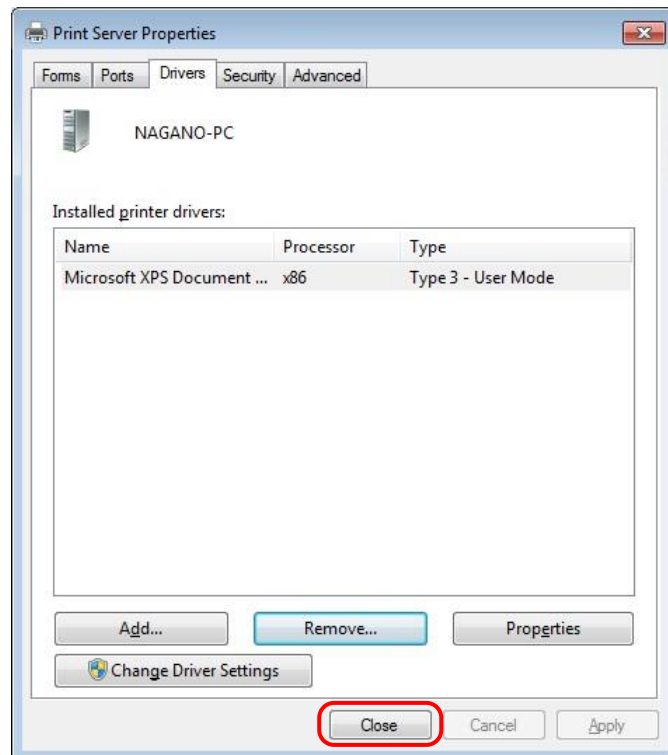


Fig 3.8 Print Server Properties window

2. Uninstalling a Driver Package

(1) Select “Start”, then “Control Panel”, and open the control panel. Click on “Uninstall a program” in the control panel.

In Windows 8, right click on the Start screen, select the right-under "All apps", select "Control Panel", click on "Uninstall a program" in the Control Panel.

In Windows 10, right click the Start., and then click "Control Panel". In the Control Panel, click "Uninstall a program".

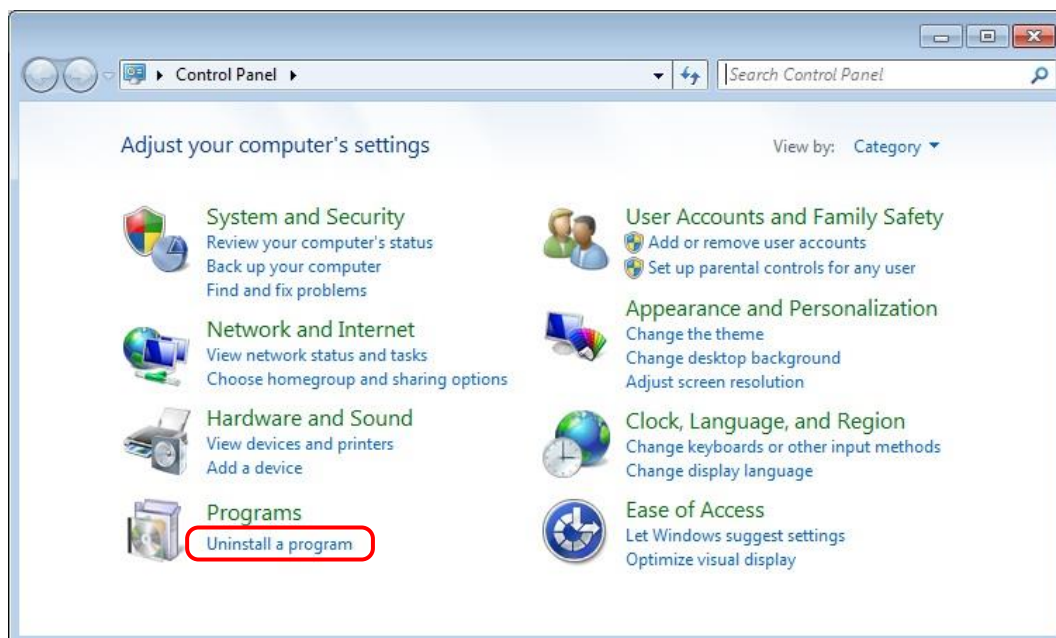


Fig 3.9 Control Panel

(2) When the “Uninstall or change a program” window appears, double-click on “Windows Driver Package – Dai Nippon Printing DP-DS80D (mm/dd/yyyy x.x.x.x)” (mm/dd/yyyy = the date, x.x.x.x = the version).

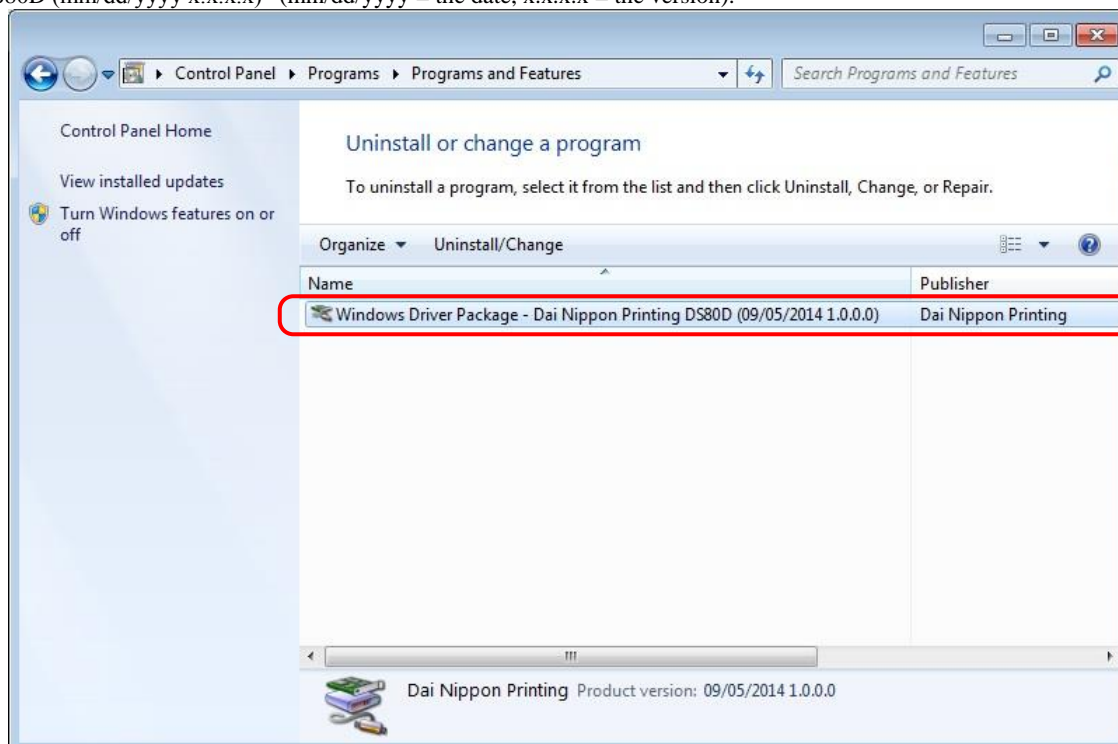


Fig 3.10 Uninstall a program

- (3) When the “Uninstall Driver Package” window appears, click on “Yes”.
The Uninstall will be completed.
After finished with uninstalling the driver package, reboot the computer.

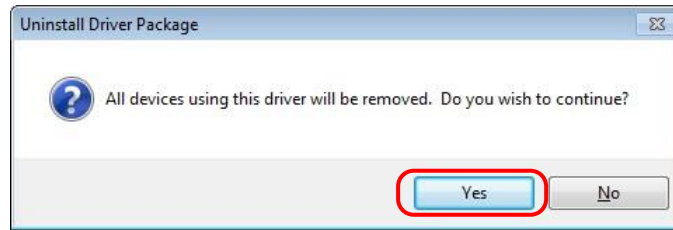


Fig 3.11 Uninstall confirmation window

3. Installing the printer-driver upgrade

After removing the printer and printer-driver, install the new printer-driver. For installation steps, please refer to Chapter 1 “Install”.

4. Rebooting the computer

After installation of the printer-driver is complete, be sure to reboot the computer.
(Do not print immediately after installation. First reboot the computer.)

Chapter 4 Driver Removal

For steps to remove the printer driver, refer to Chapter 3 “1. Driver Removal” and “2. Uninstalling a Driver Package”.

Dai Nippon Printing Co., Ltd.